

# LATVIJA EIROPAS SAVIENĪBAS PĒTNIECĪBAS UN INOVĀCIJU PAMATPROGRAMMĀ “APVĀRSNIS 2020” PĀRSKATS PAR PERIODU: 01.01.2014. – 17.06.2020.

## Ievads

Pārskata mērķis ir sniegt informāciju par Latvijas pārstāvju dalību un sekmēm pētniecības un inovācijas pamatprogrammā “Apvārsnis 2020” (A2020) no programmas sākuma 2014. gada 1. janvārī līdz 2020. gada 17. jūnijam, ar kuru datēta pēdējā programmas datu atjaunināšana Eiropas Komisijas datu bāzēs.

## 1. Datu avoti un to apkopšana

Pārskatā izmantotie dati apkopoti no divām datu vietnēm – ierobežotas piekļuves Eiropas Komisijas *eCORDA* datu bāzes (External COmmon Research DAta Warehouse) un publiski pieejamās Eiropas Komisijas Pētniecības informācijas dienesta *CORDIS* mājas lapas (Community Research and Development Information Service).

## 2. Pētniecības un inovāciju programma “APVĀRSNIS 2020”

Programma "Apvārsnis 2020" ir nozīmīgs "Eiropa 2020" stratēģijas pamatiniciatīvas "Inovācijas savienība" ieviešanas instruments, kas vērsts uz Eiropas konkurētspējas stiprināšanu pasaules mērogā.

"Apvārsnis 2020" apvieno dažādus ES pētniecības un inovācijas finansējuma instrumentus vienotā programmā un, vairāk nekā jebkad iepriekš, programma ir vērsta uz to, lai zinātniskos atklājumus pārvērstu inovatīvos produktos un pakalpojumos, kas radītu jaunas iespējas uzņēmējdarbībai un uzlabotu cilvēku dzīvi. "Apvārsnis 2020" stimulē ekonomiku, stiprina ES zinātnes un tehnoloģijas bāzi un rūpniecisko konkurētspēju nākotnē, tiecoties uz viedāku, ilgtspējīgāku un iekļaujošāku sabiedrību.

Programmas "Apvārsnis 2020" līdzekļi paredzēti **trīs galveno mērķu sasniegšanai:**

- 1. zinātnes izcilība,**
- 2. vadošā loma rūpniecībā,**
- 3. sabiedrības problēmu risināšana.**

Programmas “Apvārsnis 2020” budžets ir vislielākais ES Pētniecības un inovāciju programmu vēsturē, sasniedzot 80 miljardus eiro, kas paredzēti ES kā pasaules līdera zinātnē pozīcijas nostiprināšanai, rūpniecības vadošās pozīcijas nodrošināšanai inovāciju jomā, svarīgāko tehnoloģiju attīstībai, nodrošinot labāku piekļuvi kapitālam un atbalstu maziem un

vidējiem uzņēmumiem, svarīgu Eiropas iedzīvotāju problēmu risināšanai sešās galvenajās jomās: veselība, demogrāfiskās pārmaiņas un labklājība; pārtikas nodrošinājums, ilgtspējīga lauksaimniecība, jūras zinātniskā un tehniskā pētniecība un bioekonomika; droša, tīra un efektīva enerģija; vieds, videi nekaitīgs un integrēts transports; klimata politika, resursu efektivitāte un izejmateriāli; un visiem atvērta, inovatīva un droša sabiedrība.

### **3. Latvijas dalība programmā Apvārsnis 2020**

Līdz 2020. gada 17. jūnijam Latvijas institūcijas Apvārsnis 2020 piedalījušās 3164 reizes, iesniedzot 2542 projektus. Eiropas Komisija finansējusi 354 projekti kopā par 87 792 657 €. Atšķirības starp piedalīšanās reizēm un projektu skaitu rodas, jo vienā projekta pieteikumā var būt vairāk kā viena institūcija no Latvijas. Turklāt, tā kā projektu lielākoties iesniedz vairāku institūciju grupa, saukta par konsorciju, tad par Latvijas projektiem uzskatāmi visi projekti, kuros vismaz viens konsorcija partneris ir no Latvijas.

Projekts tiek pieskaitīts tam gadam, kurā beidzas tā pieteikumu iesniegšanas termiņš. Parasti, tas sakrīt ar gadu konkursa nosaukumā, taču retos gadījumos, piemēram, ja tiek pagarināti pieteikumu termiņi, konkursa nosaukumā ierakstītais gads var nesakrist ar iesniegšanas termiņa gadu.

Apvārsnis 2020 vērtēšanas un līgumu slēgšanas process standarta gadījumos aizņem astoņus mēnešus, tāpēc datiem sagaidāma vismaz tik ilga aizkave. Šī iemesla dēļ pilnie dati par 2020. gadu būs pieejami tikai 2021. gada vidū.

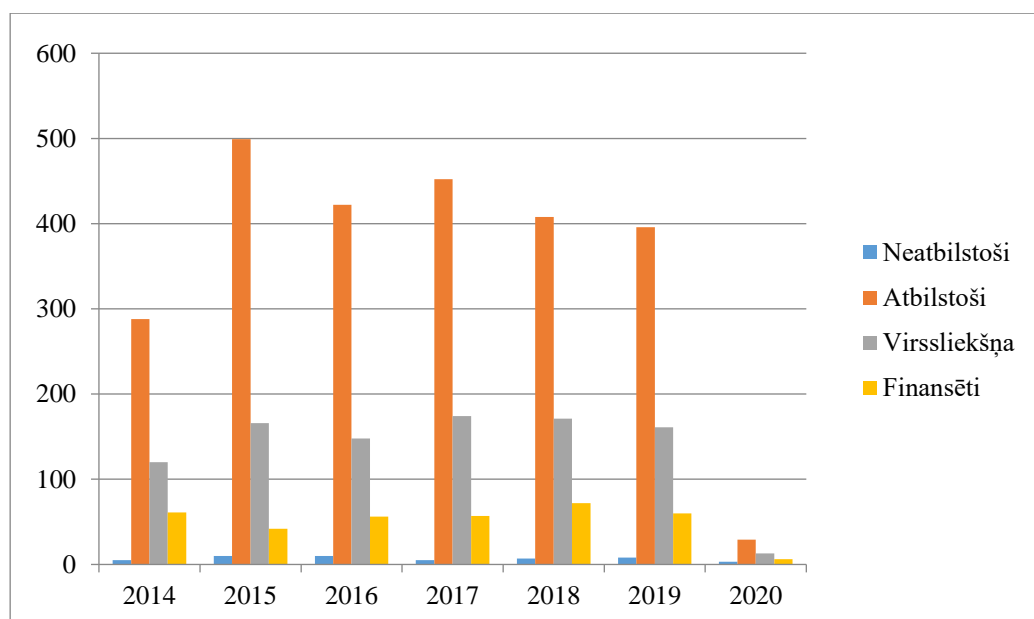
Apvārsnis 2020 programmā projekti iziet caur vairākām vērtēšanas fāzēm. Vispirms notiek iesniegto projektu administratīvs izvērtējums, pēc kura tie iegūst statusu “Atbilstošs” (Eligible) vai “Neatbilstošs” (Ineligible). Pēc tam notiek saturiskā vērtēšana, kurā vērtē pieteikuma būtību. Šajā vērtēšanā tiek noteikts kvalitātes sliekšnis, kurš dažādās Apvārsnis 2020 tēmās ir atšķirīgs. Kvalitatīvi uzrakstītie projekti tiek saukti par “Virssliekšņa projektiem” (AboveThreshold) un tikai tie var pretendēt uz finansējuma saņemšanu. Lielākoties visiem virssliekšņa projektiem finansējums nepietiek, tāpēc ir atsevišķa grupa “Finansētie projekti” (Granted). Projektu sadalījums pa gadiem parādīts 3.1 tabulā.

**3.1. tabula.** Apvārsnis 2020 projektu sadalījums pa gadiem un vērtēšanas stadijām.

Gads	Neatbilstoši	Atbilstoši	Virssliekšņa	Finansēti	Saņemtais finansējums
2014	5	288	120	61	13 071 999.16 €
2015	10	499	166	42	7 642 305.17 €
2016	10	422	148	56	18 088 350.28 €
2017	5	452	174	57	10 449 384.36 €
2018	7	408	171	72	24 303 274.53 €
2019	8	396	161	60	12 594 413.76 €
2020*	3	29	13	6	1 642 931.25 €*
<b>Kopā</b>	<b>48</b>	<b>2494</b>	<b>953</b>	<b>354</b>	<b>87 792 656.51 €</b>

\* Līgumu slēgšanas procesa un eCORDA uzskaites kritēriju dēļ pilnīgi dati par 2020. gadu būs pieejami tikai 2021. gada vidū

Latvijas pieteicēji iesnieguši 2542 projektus. No tiem 48 bija neatbilstoši, 2494 atbilstoši. No atbilstošajiem 953 projekti tika novērtēti virs kvalitātes sliekšņa, bet 354 projekts saņēma finansējumu. **Eiropas Komisija ir finansējusi 13.93 % Latvijas iesniegto projektu un 37.15 % virssliekšņa projektu.** Tātad apmēram katru astoto iesniegto projektu un katru trešo kvalitatīvi uzrakstīto projektu. Projektu sadalījums pa gadiem un vērtēšanas stadijām ir redzams 3.1 attēlā.



**3.1. attēls.** Apvārsnis 2020 projektu sadalījums pa gadiem un vērtēšanas stadijām.

Eiropas Komisija katram projektam norāda lēmumu iekļaut to finansēto projektu sarakstā “Main”, iespējams finansējamo projektu sarakstā “Reserve”, sarunvalodā sauktā par “rezerves listi”. Vai arī norāda, ka projekts novērtēts virs kvalitātes sliekšņa, bet tā finansēšanai nepietika līdzekļu “NoMoney”, projekts bija zem kvalitātes sliekšņa “Rejected”, projekts tika atsaukts “Withdrawn”, vai arī tas neizpildīja konkursa nosacījumus “Ineligible” un “Inadmissible”.

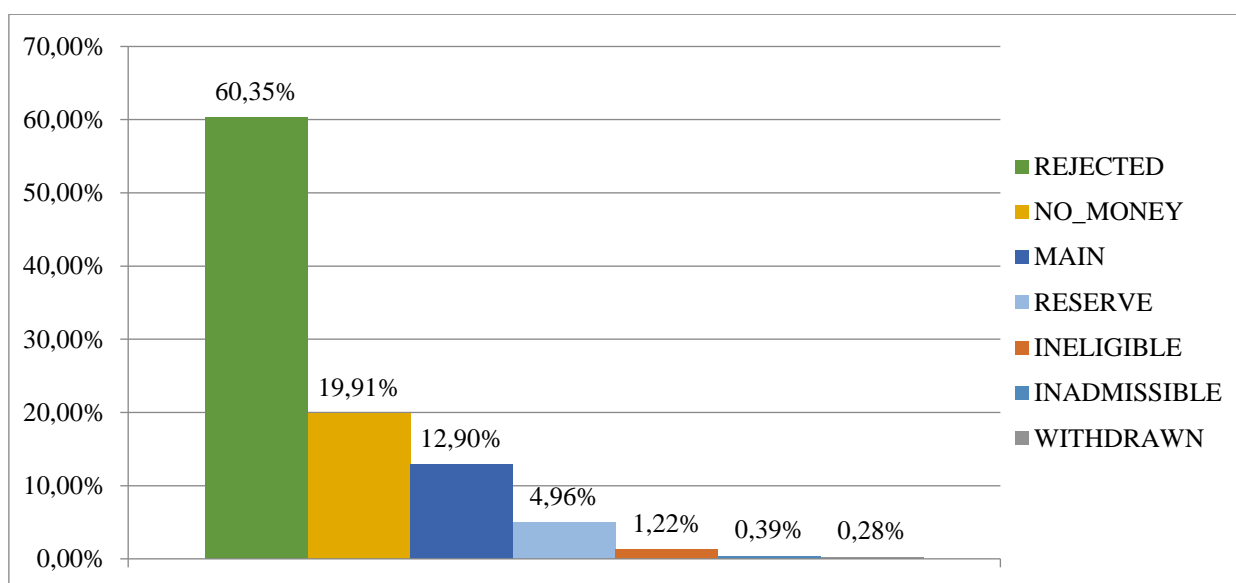
Pēdējie divi lēmumi parasti tiek līdz galam neizpildītiem projektu pieteikumiem. Latvijas projektu sadalījums pa Eiropas Komisijas lēmumiem parādīts 3.2 tabulā.

**3.2. tabula.** Apvārsnis 2020 projektu sadalījums pa gadiem un pēc Eiropas Komisijas lēmumiem.

Gads	Ineligible	Inadmissible	Withdrawn	Rejected	NoMoney	Reserve	Main
2014	5	0	0	168	47	19	54
2015	7	3	0	332	106	19	42
2016	6	0	4	274	82	15	51
2017	2	2	1	277	102	21	52
2018	3	3	1	233	83	25	67
2019	6	1	1	234	83	23	56
2020*	2	1	0	16	3	4	6
<b>Kopā</b>	<b>31</b>	<b>10</b>	<b>7</b>	<b>1534</b>	<b>506</b>	<b>126</b>	<b>328</b>

\* Projektu pieteikumu procesa un eCORDA uzskaites kritēriju dēļ pilnīgi dati par 2020. gadu būs pieejami tikai 2021. gada vidū

Projektu relatīvais sadalījums pa Eiropas Komisijas lēmumiem ir parādīts 3.2 attēlā. 1.22 %, 0.39 % un 0.28 % projektu neizpilda konkursa nosacījumus vai tiek atsaukti. Lielākā daļa – 60.35 % – projektu neiztur pilno vērtēšanu un tiek noraidīti kā nepietiekami kvalitatīvi (“zemsliedzē” projekti). Nākamā grupa – NoMoney – ar 19.91 % ir kvalitatīvi projekti, kuriem nepietika finansējuma. Tai ar 12.40 % seko kvalitatīvi projekti, kuri tiks finansēti. Tā sauktajā “rezerves listē” nokļūst 4.96 % projektu. Vai tiem piešķirt finansējumu izvērtē Eiropas Komisija, ņemot vērā dažādus apstākļus. **Tā kā finansē 13.93 % Latvijas iesniegto projektu, bet “Main” sarakstā atrodas tikai 12.40 %, tad 1.5 procentpunkts no finansētajiem projektiem nāk no “rezerves listes”.** Nedaudz mazāk kā trešdaļa “rezerves listē” esošo Latvijas projektu tiek finansēti.



**3.2. attēls.** Projektu relatīvais sadalījums atbilstoši Eiropas Komisijas lēmumiem.

Apvārsnis 2020 institūcijas ir iedalītas piecās grupās. Augstākās izglītības institūcijas (AII) ir Latvijas augstskolas, koledžas, universitātes utt. Uzņēmumi ir komercreģistrā reģistrētas institūcijas, kurām var rasties peļņa. Šī grupa ietver arī valsts un pašvaldību uzņēmumus. Valsts un pašvaldību institūcijas (VPI) ir dažādas ministrijas, pašvaldības un cita veida publiskās institūcijas, piemēram, plānošanas reģioni, tiesas, Valsts kase u.c. Citas pētniecības institūcijas ietver sevī Latvijas pētniecības institūtus, bet grupa citi ir tām institūcijām, kuras neietilpst nevienā no iepriekš minētajām definīcijām, pārsvarā tās ir dažādas nevalstiskās organizācijas.

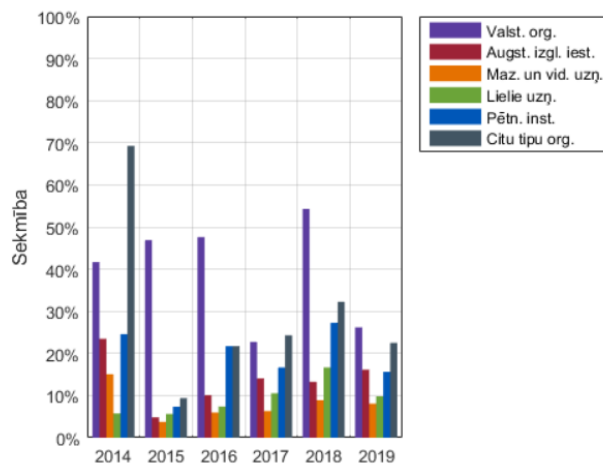
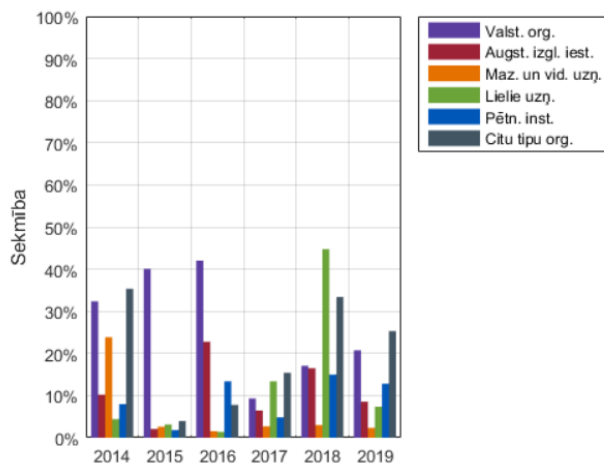
**3.3 tabula.** Latvijas institūciju dalības Apvārsnis 2020.

Institūcijas tips	Neatbilst.	Atbilst.	Virssliekšņa	Finansētas
Augstākās izglītības iestādes	17	902	353	116
Uzņēmumi	26	1327	376	100
Valsts, pašvaldību institūcijas	2	229	131	92
Citas pētniecības institūcijas	5	463	252	85
Citi	5	188	83	50
<b>Kopā</b>	<b>55</b>	<b>3109</b>	<b>1195</b>	<b>443</b>

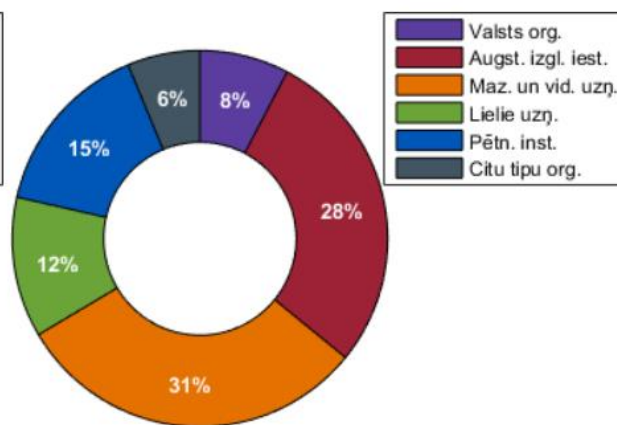
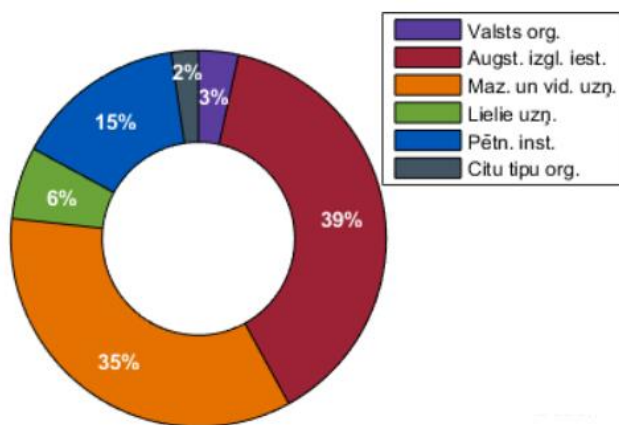
3.3. tabulā parādītas institūciju piedalīšanās reizes. Tās atšķiras no projektu skaita, jo vienā projektā var būt vairāk kā viena institūcija no Latvijas. **Visvairāk reizes Apvārsnis 2020 piedalījušies uzņēmumi – 1353 reizes.** Uzņēmumiem arī ir visvairāk virssliekšņa novērtēto dalību – 376 – bet AII ir visvairāk finansēto dalību – 116.

3.3. attēlā parādīts dalību, sekmības sadalījums pa institūciju grupām. Sekmības ir konkrētas grupas finansēto dalību skaits pret konkrētās grupas visu dalību skaitu.

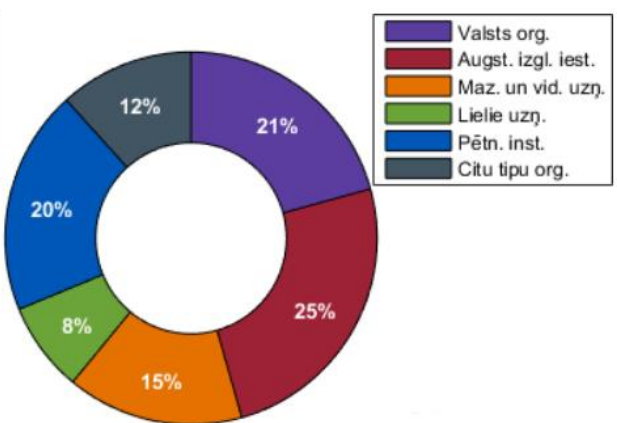
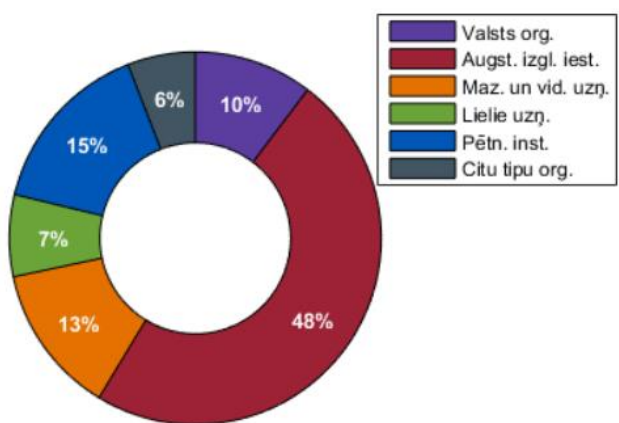
Apvārsnis 2020 projektiem tiek īpaši uzsvērta nepieciešamība pēc starptautiska, starpdisciplināra un starpsektorāla konsorcija, tāpēc konsorcijā cenšas pieteikumos iesaistīt valsts iestādes. VPI Eiropā ir krietni mazāk nekā citas institūcijas, piemēram, Eiropas Savienībā ir tikai 28 Valsts ieņēmumu dienesti vai to ekvivalenti. Tāpēc šīs institūcijas var izvēlēties iesaistīties labākajos konsorcijos. Tas varētu būt viens no izskaidrojumiem VPI augstajai sekmībai.



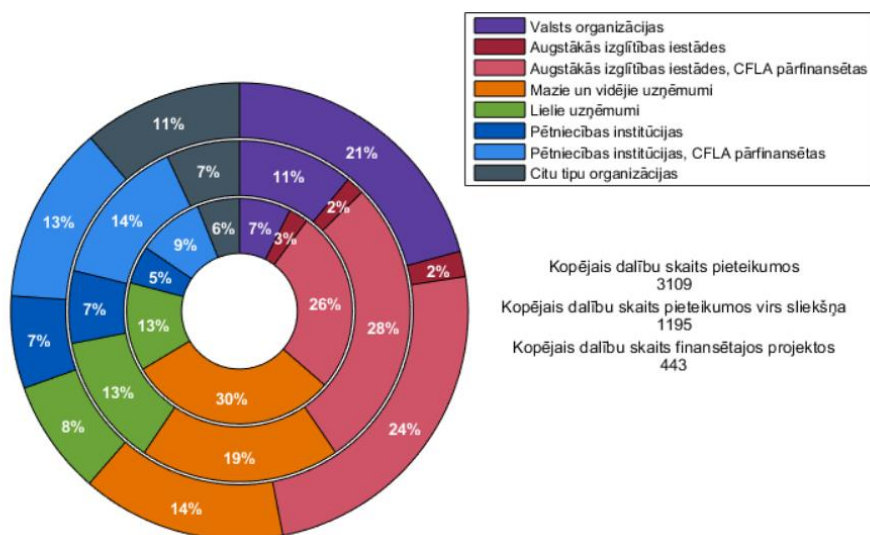
3.3. attēls. Sukmība organizācijas tipa un gada šķēlumā: EK finansējums, Projektu skaits.



3.4. attēls. Pieteikumu skaita īpatsvars pēc organizāciju tipiem: EK finansējums, Projektu skaits.



3.5. attēls. Finansēto projektu īpatsvars pēc organizāciju tipiem: EK finansējums, Projektu skaits.



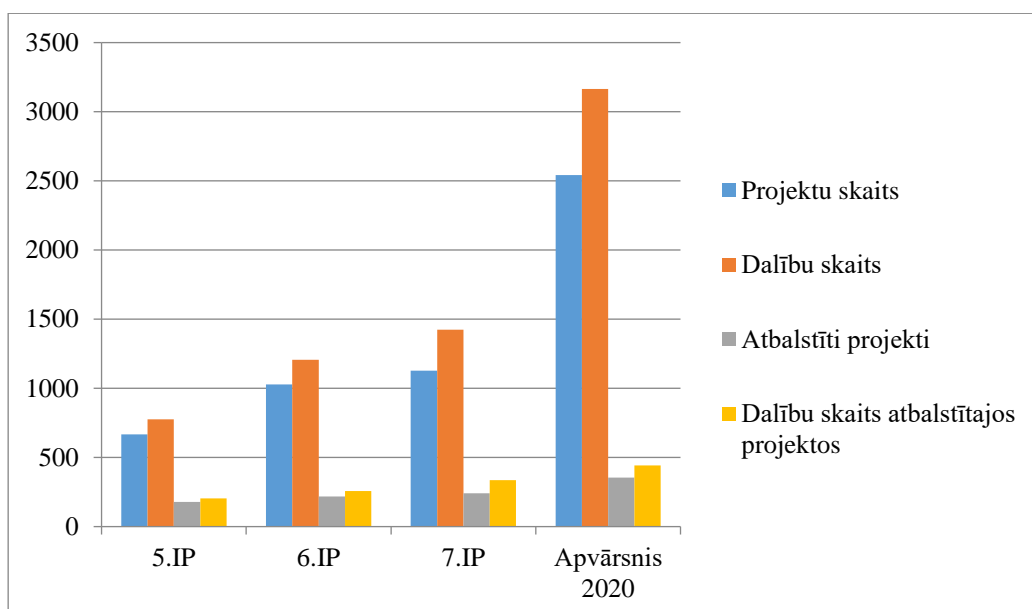
**3.6. attēls.** Dalību skaita īpatsvars projektu pieteikumos, virs sliekšņa esošajos pieteikumos un finansētajos projektos. Sadalīts pēc organizāciju tiem.

Latvijas piedalīšanās Eiropas ietvarprogrammās ir salīdzināta 3.4 tabulā. Latvijas sekmība Apvārsnis 2020 ir zemāka kā iepriekšējās programmās, bet piesaistītais finansējums ir daudz lielāks, kas skaidrojams ar krietni lielāku iesniegto projektu skaitu. Vizuāli programmu salīdzinājums ir attēlots 3.7. attēlā.

**3.4. tabula.** Latvijas dalības Apvārsnis 2020 un iepriekšējās ietvarprogrammās.

	<b>5.IP</b> <b>(1999-2002)</b>	<b>6.IP</b> <b>(2002-2006)</b>	<b>7.IP</b> <b>(2007-2013)</b>	<b>Apvārsnis 2020</b> <b>(2014-2020)*</b>
Projektu pieteikumu skaits	667	1027	1127	<b>2542</b>
Dalību skaits projektu pieteikumos	776	1206	1424	<b>3164</b>
Atbalstītie projekti	178	217	240	<b>354</b>
Dalību skaits atbalstītajos projektos	204	258	337	<b>443</b>
Projektu koordinatori	2	11	30	<b>48</b>
Sekmība	26.70%	21.10%	21.30%	<b>13.93%</b>
EK finansējums (EUR, miljoni)	14.6	21.6	49.04	<b>87.79</b>

\*līdz 2020. gada 17. jūnijam



**3.7. attēls.** Latvijas dalības Apvārsnis 2020 un iepriekšējās ietvarprogrammās.

**Latvijas pieteicēji visvairāk sadarbojas ar Vācijas institūcijām**, nākamās populārākās partnervalstis ir Itālija, Spānija, Beļģija un Francija. Redzams, ka lielās Eiropas Savienības dalībvalstis atrodas saraksta augšgalā. Tas nav pārsteidzoši, tā kā šīm valstīm ir vairāk iedzīvotāju un zinātnieku, tad sagaidāms, ka tās būs iesaistītas vairāk projektos.

**3.5 tabula.** Partnervalstu skaits finansētajos projektos.

Partnerības valsts ISO kods	Partnerību skaits finansētajos projektos
DE	249
IT	207
ES	203
BE	194
FR	194
UK	185
NL	180
PL	161
AT	147
PT	142



**3.6. tabula.** Pirmās desmit Latvijas institūcijas pēc piešķirtā finansējuma apjoma.

Organizācijas nosaukums (EK datubāzē)	Iesniegto dalību skaits	Iesniegto koordināciju skaits	Dalību skaits	Koordināciju skaits	EK finansējums, miljoni EUR
INSTITUTE OF SOLID STATE PHYSICS, UNIVERSITY OF LATVIA	32	15	5	2	14.09
RIGAS TEHNISKA UNIVERSITATE	267	64	30	7	13.09
LATVIJAS UNIVERSITATE	307	96	40	5	7.71
LATVIJAS ORGANISKAS SINTEZES INSTITUTS	68	18	14	2	5.29
VALSTS IZGLITIBAS ATTISTIBAS AGENTURA	35	5	39	2	4.31
RIGAS STRADINA UNIVERSITATE	70	17	12	2	3.26
NODIBINAJUMS BALTIC STUDIES CENTRE	26	0	7	0	2.58
TILDE SIA	55	5	12	0	2.25
SABIEDRIBA AR IEROBEZOTU ATBILDIBURIGAS STRADINA UNIVERSITATES STOMATOLOGIJAS INSTITUTS	1	0	2	0	1.98
EKODOMA	45	2	9	1	1.53

Pirmās desmit Latvijas institūcijas pēc piesaistītā finansējuma apjoma parādītas 3.6. tabulā. Līderis ir LU Cietvielu fizikas institūts ar 14.09 miljoniem eiro. Lauvas tiesu sastāda “Centre of Advanced Materials Research and Technology Transfer CAMART<sup>2</sup>” projekts ar 11’087’608.75 eiro finansējumu. Virs desmit miljoniem piesaistījusi arī Rīgas Tehniskā universitāte, kurai lielāko daļu – 7 547 399.50 eiro – sastāda projekts “Baltic Biomaterials Centre of Excellence”. Abi projekti ir *Teaming* tēmā, kurā piešķir finansējumu izcilu pētniecības centru attīstīšanai “jaunajā” Eiropā.

#### 4. Latvijas dalība Apvārsnis 2020 apakšprogrammās

Apvārsnis 2020 programma ir sadalīta 43 apakšprogrammās. To apzīmēšanai tradicionāli tiek izmantoti angļu valodas saīsinājumi, tādēļ pie tiem esam pieturējušies arī šeit. Apakštēmas uzskaitītas 4.1 tabulā, taču ne visām parādīti tulkojumi latviešu valodā, jo ne visām tie ir pieejami pat Eiropas Savienības dokumentos.

**4.1. tabula.** Apvārsnis 2020 apakštēmas.

Numurs	Saīsinājums	Apakštēma angļiski	Apakštēma latviski
EU.0.	CROSST	Cross-theme	
EU.1.0.	EXCSCI-CROSST	Excellent Science - Cross-theme	Zinātnes izcilība
EU.1.1.	ERC	European Research Council (ERC)	Eiropas Pētniecības padome
EU.1.2.	FET	Future and Emerging Technologies (FET)	Nākotnes un jaunās tehnoloģijas
EU.1.3.	MSCA	Marie-Sklodowska-Curie Actions	Marijas Sklodovskas-Kirī vārdā nosauktā programma
EU.1.4.	INFRA	Research Infrastructures	Pētniecības infrastruktūras
EU.2.0.	INDLEAD-CROSST	Industrial Leadership - Cross-theme	Rūpniecības tehnoloģijas
EU.2.1.	LEIT	Leadership in enabling and industrial technologies (LEIT)	Vadošā loma pamat un industriālajās tehnoloģijās
EU.2.1.1.	LEIT-ICT	Information and Communication Technologies	Informācijas un komunikācijas tehnoloģijas
EU.2.1.2.	LEIT-NMP	Nanotechnologies	Nanotehnoloģijas
EU.2.1.3.	LEIT-ADVMAT	Advanced materials	Modernie materiāli
EU.2.1.4.	LEIT-BIOTECH	Biotechnology	Biotehnoloģija
EU.2.1.5.	LEIT-ADVMANU	Advanced manufacturing and processing	Progresīvā ražošana un pārstrāde
EU.2.1.6.	LEIT-SPACE	Space	Kosmos
EU.2.2.	RISKFINANCE	Access to risk finance	Pieklūve riska finansējumam
EU.2.3.	INNOSUPSME	Innovation in SMEs	Inovācija Maziem un vidējiem uzņēmumiem
EU.3.0.	SOCCHAL-CROSST	Societal Challenges - Cross-theme	Sabiedrības izaicinājumi
EU.3.1.	HEALTH	Health, demographic change and wellbeing	Veselība, demogrāfiskās pārmaiņas un labklājība
EU.3.2.	FOOD	Food security, sustainable agriculture and forestry, marine and maritime and inland water research and the bioeconomy	Pārtikas nodrošinājums, ilgtspējīga lauksaimniecība un mezsaimniecība, jūras, jūrlietu un iekšzemes ūdeņu pētniecība un bioekonomika.
EU.3.3.	ENERGY	Secure, clean and efficient energy	Droša, tīra un efektīva enerģija
EU.3.4.	TPT	Smart, green and integrated transport	Vieds, videi nekaitīgs un integrēts transports
EU.3.5.	ENV	Climate action, environment, resource efficiency and raw materials	Klimata politika, vide, resursu efektivitāte un izejvielas
EU.3.6.	SOCIETY	Europe in a changing world - inclusive, innovative and reflective Societies	Eiropa mainīgā pasaulē – iekļaujoša, novatoriska un domājoša sabiedrība
EU.3.7.	SECURITY	Secure societies - Protecting freedom and security of Europe and its citizens	Droša sabiedrība
EU.4.0.	SEAWP-CROSST	Spreading excellence and widening participation - Cross-theme	Izcilības izplatīšana un dalības paplašināšana

Numurs	Saīsinājums	Apakštēma angļiski	Apakštēma latviski
EU.4.a.	WIDESPREAD	Teaming of excellent research institutions and low performing RDI regions	
EU.4.b.	TWINING	Twinning of research institutions	
EU.4.c.	ERA	ERA chairs	
EU.4.d.	PSF	Policy Support Facility (PSF)	
EU.4.e.	INTNET	Supporting access to international networks	
EU.4.f.	NCPNET	Transnational networks of National Contact Points	
EU.5.0.	SWAFS-CROSST	Science with and for Society - Cross-theme	Zinātne sabiedrībai un sadarbībā ar to
EU.5.a.	CAREER	Make scientific and technological careers attractive for young people	
EU.5.b.	GENDEREQ	Promote gender equality in research and innovation	
EU.5.c.	INEGSOC	Integrate society in science and innovation	
EU.5.d.	SCIENCE	Encourage citizens to engage in science	
EU.5.e.	RESACCESS	Develop the accessibility and the use of the results of publicly-funded research	
EU.5.f.	GOV	Develop the governance for the advancement of responsible research and innovation	
EU.5.g.	IMPACT	Anticipating and assessing potential environmental, health and safety impacts	
EU.5.h.	KNOWLEDGE	Improve knowledge on science communication	
EU.6.	JRC	Non-nuclear direct actions of the Joint Research Centre (JRC)	
EU.7.	EIT	The European Institute of Innovation and Technology (EIT)	
Euratom	EURATOM	Euratom	Euratom

Projektu skaits un finansējums trīs galveno pīlāru apakšprogrammās parādīts 4.2. tabulā. Trīs pīlāru apakšprogrammas ir izdalītas atsevišķi, jo tajās visi pieteicēji startē vienlīdzīgos apstākļos, savukārt pārējās Apvārsnis 2020 daļās konkurence var būt ierobežota, lai piesaistītu kādu konkrētu mērķauditoriju, piemēram, “jaunās” Eiropas valstis.

4.2. tabulā parādīts saņemtais finansējums pa apakšprogrammām, kurās iesniegts vismaz viens pieteikums. **Visvairāk finansējuma mēs piesaistām WIDESPREAD, ENERGY, FOOD un ICT programmās.** WIDESPREAD programma paredzēta izcilu zinātnes centru attīstīšanai “jaunajās” Eiropas Savienības dalībvalstīs. ENERGY tēma ir saistīta ar dažādām enerģijas

ražošanas, pārvades, sadales un energoefektivitātes problēmām. FOOD joma ir saistīta ar pētījumiem pārtikas ražošanā, lauksaimniecībā, mežsaimniecībā utml. ICT ir saistīta ar dažādiem jautājumiem robotikā, mākslīgajā intelektā utml.

**ERC, ERA, GENDEREQ un RESACCESS ir vienīgās programmas, kurās esam piedalījušies, bet neesam ieguvuši finansējumu.** ERC programmā finansē izcilus zinātniekus, kuri vēlas attīstīt savu pētniecības grupu kādā jaunā un ambiziozā tēmā. Tur uzsvars tiek likts uz radikāli jaunām jomām, kuras augļus nesīs tikai pēc desmitgadēm. ERA ir programma, kurā piešķir finansējumu, lai pētniecības institūcija attīstītu savu kapacitāti, piesaistot starptautiski atzītu pētnieku, kurš tajā attīsta perspektīvu pētniecības virzienu. GENDEREQ un RESACCESS programmās tiek atbalstīti pasākumi dzimumu līdztiesības veicināšanai akadēmiskajā vidē un uzlabota piekļuve publiski finansētas pētniecības rezultātiem.

**4.2. tabula.** Latvijas sekmīgums pa Apvārsnis 2020 tēmām

Tēmas kods	Tēma	Koordinācijas	Dalības	LV EK finansējums	Procenti no kopējā	Tēmas apraksts
EU.0.	CROSST	0	1	€ 269 332.00	0.06%	Cross-theme
EU.1.0.	EXCSCI-CROSST	0	0	€ 0.00	-	Excellent Science - Cross-theme
EU.1.1.	ERC	0	0	€ 0.00	-	European Research Council (ERC)
EU.1.2.	FET	0	8	€ 1 968 236.44	0.09%	Future and Emerging Technologies (FET)
EU.1.3.	MSCA	8	44	€ 5 790 522.52	0.11%	Marie-Sklodowska-Curie Actions
EU.1.4.	INFRA	0	26	€ 1 690 848.54	0.08%	Research Infrastructures
EU.2.0.	INDLEAD-CROSST	0	0	€ 0.00	0.00%	Industrial Leadership - Cross-theme
EU.2.1.	LEIT	0	0	€ 0.00	-	Leadership in enabling and industrial technologies (LEIT)
EU.2.1.1.	LEIT-ICT	2	54	€ 10 024 237.62	0.16%	Information and Communication Technologies
EU.2.1.2.	LEIT-NMP	1	4	€ 1 003 596.38	0.19%	Nanotechnologies
EU.2.1.3.	LEIT-ADVMAT	0	6	€ 1 110 699.40	0.11%	Advanced materials
EU.2.1.4.	LEIT-BIOTECH	1	2	€ 168 308.96	0.04%	Biotechnology

EU.2.1.5.	LEIT-ADVMANU	1	8	€ 1 546 647.50	0.10%	Advanced manufacturing and processing
EU.2.1.6.	LEIT-SPACE	2	6	€ 336 702.48	0.04%	Space
EU.2.2.	RISKFINANCE	1	2	€ 350 000.00	3.60%	Access to risk finance
EU.2.3.	INNOSUPSME	9	14	€ 484 311.00	0.03%	Innovation in SMEs
EU.3.0.	SOCCHAL-CROSST	0	0	€ 0.00	-	Societal Challenges - Cross-theme
EU.3.1.	HEALTH	1	30	€ 4 476 793.90	0.09%	Health, demographic change and wellbeing
EU.3.2.	FOOD	0	62	€ 8 092 959.02	0.29%	Food security, sustainable agriculture and forestry, marine and maritime and inland water research and the bioeconomy
EU.3.3.	ENERGY	3	78	€ 10 442 324.36	0.24%	Secure, clean and efficient energy
EU.3.4.	TPT	3	19	€ 2 889 238.14	0.06%	Smart, green and integrated transport
EU.3.5.	ENV	1	11	€ 2 374 570.93	0.10%	Climate action, environment, resource efficiency and raw materials
EU.3.6.	SOCIETY	0	13	€ 1 987 774.71	0.24%	Europe in a changing world - inclusive, innovative and reflective Societies
EU.3.7.	SECURITY	1	18	€ 1 664 576.25	0.13%	Secure societies - Protecting freedom and security of Europe and its citizens
EU.4.0.	SEAWP-CROSST	2	4	€ 457 039.74	3.38%	Spreading excellence and widening participation - Cross-theme
EU.4.a.	WIDESPREAD	4	10	€ 24 401 605.75	6.25%	Teaming of excellent research institutions and low performing RDI regions

EU.4.b.	TWINING	8	8	€ 3 194 561.25	1.64%	Twinning of research institutions
EU.4.c.	ERA	0	0	€ 0.00	-	ERA chairs
EU.4.d.	PSF	0	0	€ 0.00	-	Policy Support Facility (PSF)
EU.4.e.	INTNET	0	0	€ 0.00	0.00%	Supporting access to international networks
EU.4.f.	NCPNET	0	2	€ 135 043.75	4.55%	Transnational networks of National Contact Points
EU.5.0.	SWAFS-CROSST	0	0	€ 0.00	-	Science with and for Society - Cross-theme
EU.5.a.	CAREER	0	2	€ 47 100.00	0.11%	Make scientific and technological careers attractive for young people
EU.5.b.	GENDEREQ	0	0	€ 0.00	-	Promote gender equality in research and innovation
EU.5.c.	INEGSOC	0	2	€ 82 000.00	0.08%	Integrate society in science and innovation
EU.5.d.	SCIENCE	0	1	€ 111 250.00	0.52%	Encourage citizens to engage in science
EU.5.e.	RESACCESS	0	0	€ 0.00	-	Develop the accessibility and the use of the results of publicly-funded research
EU.5.f.	GOV	0	1	€ 74 090.00	0.08%	Develop the governance for the advancement of responsible research and innovation
EU.5.g.	IMPACT	0	0	€ 0.00	0.00%	Anticipating and assessing potential environmental, health and safety impacts
EU.5.h.	KNOWLEDGE	0	0	€ 0.00	0.00%	Improve knowledge on science communication

EU.6.	JRC	0	0	€ 0.00	-	Non-nuclear direct actions of the Joint Research Centre (JRC)
EU.7.	EIT	0	0	€ 0.00	-	The European Institute of Innovation and Technology (EIT)
Euratom	EURATOM	0	7	€ 2 618 285.87	0.24%	Euratom
<b>Kopā</b>		<b>48</b>	<b>443</b>	<b>€ 87 792 656.51</b>		

#### 4.3. tabula. Visu finansēto projektu saraksts

Projekta nosaukums / akronīms	Projekta īstenošanas laiks	Projekta iesniegšanas datums	Projekta veids	Latvijas dalībnieks projektā
<b>EU.0. - CROSST - Cross-theme</b>				
Off-grid digital out-of-home public information LCD screen technology with solar-assisted backlight / SolarDOOH	2020-05-01 - 2022-10-31	2019-10-22	IA	LIGHT GUIDE OPTICS INTERNATIONAL
<b>EU.1.2. - FET - Future and Emerging Technologies (FET)</b>				
QuantERA ERA-NET Cofund in Quantum Technologies / QuantERA	2016-11-01 - 2021-10-31	2016-04-12	ERA-NET-Cofund	VALSTS IZGLITIBAS ATTISTIBAS AGENTURA
The Flagship ERA-NET / FLAG-ERA II	2016-12-01 - 2021-11-30	2016-03-01	ERA-NET-Cofund	VALSTS IZGLITIBAS ATTISTIBAS AGENTURA
High Frequency Topological Insulator devices for Metrology / HiTIME	2018-02-01 - 2022-01-31	2017-01-16	RIA	LATVIJAS UNIVERSITATE
The Flagship ERA-NET — FLAG-ERA III / FLAG-ERA III	2018-12-01 - 2023-11-30	2018-04-17	ERA-NET-Cofund	VALSTS IZGLITIBAS ATTISTIBAS AGENTURA
FUTURISTIC BEEHIVES FOR A SMART METROPOLIS / HIVEOPOLIS	2019-04-01 - 2024-03-31	2018-03-22	RIA	LATVIJAS LAUKSAIMNIECIBAS UNIVERSITATE
European Coordinated Research on Long-term ICT and ICT-based Scientific and Technological Challenges / CHIST-ERA IV	2019-12-01 - 2024-11-30	2018-12-18	ERA-NET-Cofund	VALSTS IZGLITIBAS ATTISTIBAS AGENTURA
Water separation revolutionized by ultrathin carbon nanomembranes / ITS-THIN	2020-08-01 - 2023-07-31	2019-09-18	RIA	RIGAS TEHNISKA UNIVERSITATE
NExT ApplicationS of Quantum Computing / NEASQC	? - ?	2019-11-13	RIA	TILDE SIA
<b>EU.1.3. - MSCA - Marie-Sklodowska-Curie Actions</b>				
Interdisciplinary Training Network for Validation of Gram-Negative Antibacterial Targets / INTEGRATE	2015-01-01 - 2018-12-31	2014-04-08	MSCA-ITN-ETN	LATVIJAS ORGANISKAS SINTEZES INSTITUTS

Development of Smart Nano and Microcapsulated Sensing Coatings for improving of Material Durability/Performance / SMARCOAT	2015-01-01 - 2018-12-31	2014-04-24	MSCA-RISE	LATVIJAS UNIVERSITATE
Children Born of War - Past, Present and Future / CHIBOW	2015-03-01 - 2019-02-28	2014-04-09	MSCA-ITN-ETN	LATVIJAS UNIVERSITATE
SUSPLACE	2015-10-01 - 2019-09-30	2015-01-13	MSCA-ITN-ETN	LATVIJAS UNIVERSITATE SABIEDRIBA AR IEROBEZOTU ATBILDIBUKALNCIEMA IELA KQ
The influence of the cell membrane asymmetry and curvature on the functioning of membrane proteins and the transport of therapeutic compounds / assymcurv	2016-01-01 - 2019-12-31	2015-04-27	MSCA-RISE	LATVIJAS UNIVERSITATES CIETVIELU FIZIKAS INSTITUTS
Peptidomimetics with photocontrolled biological activity / PELICO	2016-01-01 - 2019-12-31	2015-04-27	MSCA-RISE	LATVIJAS ORGANISKAS SINTEZES INSTITUTS
Multimodal Spectral Imaging for Canine Skin Erythema Estimation: from the Lab to the Clinic – DogSPEC / DogSPEC	2017-08-22 - 2020-04-13	2016-09-12	MSCA-IF-EF-ST	LATVIJAS UNIVERSITATE
Combatting Antimicrobial Resistance Training Network / CARTNET	2018-01-01 - 2021-12-31	2017-01-10	MSCA-ITN-ETN	LATVIJAS ORGANISKAS SINTEZES INSTITUTS
Integrated Training in Dry Eye Disease Drug Development (IT-DED3) / IT-DED3	2018-01-01 - 2021-12-31	2017-01-10	MSCA-ITN-ETN	LATVIJAS ORGANISKAS SINTEZES INSTITUTS
Nanostructural surface development for dental implant manufacturing / NanoSurf	2018-01-01 - 2021-12-31	2017-04-05	MSCA-RISE	LATVIJAS UNIVERSITATE
Novel 1D photonic metal oxide nanostructures for early stage cancer detection / CanBioSe	2018-01-01 - 2021-12-31	2017-04-05	MSCA-RISE	LATVIJAS UNIVERSITATE
Minority Languages, Major Opportunities. Collaborative Research, Community Engagement and Innovative Educational Tools / COLING	2018-01-01 - 2021-12-31	2017-04-05	MSCA-RISE	LATGOLYS STUDENTU CENTRS
Sustainable, Accessible, Safe, Resilient and Smart Urban Pavements / SAFERUP	2018-03-01 - 2022-02-28	2017-01-09	MSCA-ITN-ETN	RIGAS TEHNISKA UNIVERSITATE CELU EKSPERTS
SHADOW: An exploration of the nature of informal economies and shadow practices in the former USSR region / SHADOW	2018-03-01 - 2022-02-28	2017-04-05	MSCA-RISE	STOCKHOLM SCHOOL OF ECONOMICS IN RIGA SIA
European Researchers' Night in Latvia 2018-2019 / NIGHTLV-2018-2019	2018-05-01 - 2019-12-31	2018-02-14	CSA	DAUGAVPILS UNIVERSITATE REZEKNES TEHNOLOGIJU AKADEMIJA LIEPAJAS UNIVERSITATE VALSTS IZGLITIBAS ATTISTIBAS AGENTURA ELEKTRONIKAS UN



				DATORZINATNU INSTITUTS LATVIJAS BIOMEDICINAS PETIJUMU UN STUDIJU CENTRS VENTSPILS AUGSTSKOLA LATVIJAS VALSTS KOKSNES KIMIJAS INSTITUTS LATVIJAS LAUKSAIMNIECIBAS UNIVERSITATE LATVIJAS UNIVERSITATE VIDZEMES AUGSTSKOLA RIGAS STRADINA UNIVERSITATE PARTIKAS DROSIBAS, DZIVNIEKU VESELIBAS UN VIDES ZINATNISKAIS INSTITUTSBIOR LATVIJAS ORGANISKAS SINTEZES INSTITUTS
Magnetics and Microhydrodynamics - from guided transport to delivery / MAMI	2018-05-01 - 2022-04-30	2017-01-10	MSCA- ITN-ETN	LATVIJAS UNIVERSITATE
MULTIFUNCTIONAL POLYMER COMPOSITES DOPED WITH NOVEL 2D NANOPARTICLES FOR ADVANCED APPLICATIONS / NANO2DAY	2018-05-01 - 2022-04-30	2017-04-04	MSCA- RISE	LATVIJAS UNIVERSITATE BALTIC SCIENTIFIC INSTRUMENTS SIA
Cross-lingual Event-centric Open Analytics Research Academy / Cleopatra	2019-01-01 - 2022-12-31	2018-01-17	MSCA- ITN-ETN	TILDE SIA
New Market: an exploration into the changing nature of business environments, informal barriers and emerging markets in the post-Soviet region / NEW MARKETS	2019-07-01 - 2023-06-30	2018-03-21	MSCA- RISE	LATVIJAS UNIVERSITATE
Early Language Development in the Digital Age / e-LADDA	2019-11-01 - 2023-10-31	2019-01-08	MSCA- ITN-ETN	SIA DATORZINIBU CENTRS
Precision medicine for musculoskeletal regeneration, prosthetics and active ageing / PREMUROSA	2020-01-01 - 2023-12-31	2019-01-14	MSCA- ITN-ETN	RIGAS TEHNISKA UNIVERSITATE
Integrative structural biology of pathological tau protein, an appealing therapeutic target for Alzheimer's disease modifying drugs / InterTAU	2020-01-01 - 2023-12-31	2019-04-02	MSCA- RISE	LATVIJAS ORGANISKAS SINTEZES INSTITUTS
Legal Cultures and Business Environments in Central Asia / CENTRAL ASIAN LAW	2020-03-01 - 2024-02-29	2019-03-28	MSCA- RISE	RIGAS JURIDISKA AUGSTSKOLA SIA LATVIJAS UNIVERSITATE
Metabolites as immunomodulatory additives for biomaterials / Met4Bone	2020-08-01 - 2022-07-31	2019-09-11	MSCA-IF- EF-ST	RIGAS TEHNISKA UNIVERSITATE
Mapping Uncertainties, Challenges and Future Opportunities of	2020-08-01 - 2024-07-31	2019-01-15	MSCA- ITN-ETN	STOCKHOLM SCHOOL OF ECONOMICS IN RIGA SIA

Emerging Markets: Informal Barriers, Business Environments and Future Trends in Eastern Europe, The Caucasus and Central Asia / MARKETS				
Fiber-optic-based imaging system deSign for SEnsing / FINESSE	? - ?	2017-09-14	MSCA-IF-EF-SE	CERAM OPTEC SIA
5G DRIVEN Resource Efficient Mobile Aggregation Networks / 5G-DRIVE	? - ?	2017-09-14	MSCA-IF-EF-ST	RIGAS TEHNISKA UNIVERSITATE
<b>EU.1.4. - INFRA - Research Infrastructures</b>				
Open Access Infrastructure for Research in Europe 2020 / OpenAIRE2020	2015-01-01 - 2018-06-30	2014-04-15	RIA	LATVIJAS UNIVERSITATE
GN4-1 Research and Education Networking - GÉANT / GN4-1	2015-05-01 - 2016-08-31	2015-04-30	SGA-RIA	LATVIJAS UNIVERSITATES MATEMATIKAS UN INFORMATIKAS INSTITUTS
European Long-Term Ecosystem and socio-ecological Research Infrastructure / eLTER	2015-06-01 - 2019-10-31	2014-09-02	RIA	LATVIJAS UNIVERSITATES AGENTURA LATVIJAS UNIVERSITATES BIOLOGIJAS INSTITUTS
EUROPLANET 2020 Research Infrastructure / EPN2020-RI	2015-09-01 - 2019-08-31	2014-09-02	RIA	LATVIJAS UNIVERSITATE
implementation and Operation of the gateway for health into BBMRI-ERIC / ADOPT BBMRI-ERIC	2015-10-01 - 2019-03-31	2015-01-14	RIA	LATVIJAS BIOMEDICINAS PETIJUMU UN STUDIJU CENTRS
The Integrated Initiative of European Laser Research Infrastructures / LASERLAB-EUROPE	2015-12-01 - 2019-11-30	2014-09-02	RIA	LATVIJAS UNIVERSITATE
Research Infrastructure for Circular Forest Bioeconomy / ERIFORE	2016-01-01 - 2018-01-31	2014-09-02	CSA	LATVIJAS VALSTS KOKSNES KIMIJAS INSTITUTS
GN4-2 Research and Education Networking - GÉANT / GN4-2	2016-05-01 - 2020-01-31	2016-03-31	SGA-RIA	LATVIJAS UNIVERSITATES MATEMATIKAS UN INFORMATIKAS INSTITUTS
BELLA-S1 Building Europe Link with Latin America / BELLA-S1	2016-05-01 - 2021-12-31	2016-04-08	SGA-RIA	LATVIJAS UNIVERSITATES MATEMATIKAS UN INFORMATIKAS INSTITUTS
SeaDataCloud - Further developing the pan-European infrastructure for marine and ocean data management / SeaDataCloud	2016-11-01 - 2020-10-31	2016-03-30	RIA	LATVIJAS HIDROEKOLOGIJAS INSTITUTS
Advancing the European Long-Term Ecosystem, critical zone and socio-ecological Research Infrastructure towards ESFRI / Advance_eLTER	2017-01-01 - 2017-12-31	2016-06-22	RIA	LATVIJAS UNIVERSITATE
Advanced Radio Astronomy in Europe / RadioNet	2017-01-01 - 2020-12-31	2016-03-30	RIA	VENTSPILS AUGSTSKOLA
Accelerator Research and Innovation for European Science and Society / ARIES	2017-05-01 - 2021-04-30	2016-03-30	RIA	RIGAS TEHNISKA UNIVERSITATE
European Cohort Development Project / ECDP	2018-01-01 - 2019-12-31	2017-03-28	RIA	DAUGAVPILS UNIVERSITATE

OpenAIRE Advancing Open Scholarship / OpenAIRE-Advance	2018-01-01 - 2020-12-31	2017-03-29	RIA	LATVIJAS UNIVERSITATE
Horizon 2020: H2020-SGA-INFRA-GEANT-2018 (Topic [a] Research and Education Networking) / GN4-3	2019-01-01 - 2022-12-31	2018-11-13	SGA-RIA	LATVIJAS UNIVERSITATES MATEMATIKAS UN INFORMATIKAS INSTITUTS
Horizon 2020: H2020-SGA-INFRA-GEANT-2018 Topic [b] Increase of Long-Term Backbone Capacity / GN4-3N	2019-01-01 - 2022-12-31	2018-11-13	SGA-RIA	LATVIJAS UNIVERSITATES MATEMATIKAS UN INFORMATIKAS INSTITUTS
Ensuring long-term sustainability of excellence in chemical biology within Europe and beyond / EU-OPENSREEN-DRIVE	2019-02-01 - 2023-01-31	2018-03-22	RIA	LATVIJAS ORGANISKAS SINTEZES INSTITUTS
The Research Infrastructures Consortium of NCPs for H2020 / RICH-2	2019-05-01 - 2020-06-30	2018-10-30	CSA	VALSTS IZGLITIBAS ATTISTIBAS AGENTURA
EOSC-Nordic	2019-09-01 - 2022-08-31	2018-11-21	RIA	RIGAS TEHNISKA UNIVERSITATE
The Integrated Initiative of European Laser Research Infrastructures / LASERLAB-EUROPE	2019-12-01 - 2023-11-30	2019-03-20	RIA	LATVIJAS UNIVERSITATE
Consolidating the capacities of EATRIS-ERIC for Personalised Medicine / EATRIS-Plus	2020-01-01 - 2023-12-31	2019-03-19	RIA	RIGAS STRADINA UNIVERSITATE
Implementation and Sustainability of Microbial Resource Research Infrastructure for 21st Century / IS_MIRRI21	2020-02-01 - 2023-01-31	2019-03-20	RIA	LATVIJAS UNIVERSITATE
eLTER Preparatory Phase Project / eLTER PPP	2020-02-01 - 2025-01-31	2019-03-20	CSA	LATVIJAS UNIVERSITATE
European long-term ecosystem, critical zone and socio-ecological systems research infrastructure PLUS / eLTER PLUS	2020-02-01 - 2025-01-31	2019-03-20	RIA	LATVIJAS UNIVERSITATE
Novel Materials Discovery / NOMAD CoE	2020-10-01 - 2023-09-30	2019-11-13	RIA	LATVIJAS UNIVERSITATE
<b>EU.2.1.1. - LEIT-ICT - Information and Communication Technologies</b>				
Transnational Cooperation among ICT NCPs / Idealist2018	2015-01-01 - 2018-12-31	2014-04-23	CSA	STARPTAUTISKA LIETISKAS OPTIKAS BIEDRIBA VALSTS IZGLITIBAS ATTISTIBAS AGENTURA
Open Framework of E-Services for Multilingual and Semantic Enrichment of Digital Content / FREME	2015-02-01 - 2017-01-31	2014-04-23	IA	TILDE SIA
QT21: Quality Translation 21 / QT21	2015-02-01 - 2018-01-31	2014-04-23	RIA	TILDE SIA
Smart Phone for Disease Detection from Exhaled Breath / SNIFFPHONE	2015-02-15 - 2019-02-14	2014-04-23	RIA	LATVIJAS UNIVERSITATE
Digital Assembly 2015 Riga / DA RIGA 2015	2015-04-01 - 2015-09-30	2015-03-17	CSA	LATVIJAS PREZIDENTURAS EIROPAS SAVIENIBAS

				PADOME SEKRETARIATS VIDES AIZARDZIBAS UN REGIONALAS ATTISTIBAS MINISTRIJA
Integrated Components for Complexity Control in affordable electrified cars / 3Ccar	2015-06-01 - 2018-10-31	2014-09-17	JTI- ECSEL- RIA	ELEKTRONIKAS UN DATORZINATNU INSTITUTS
Scalable Understanding of Multilingual Media / SUMMA	2016-02-01 - 2019-01-31	2015-04-14	RIA	SABIEDRIBA AR IEROBEZOTU ATBILDIBU LETA
Float zone silicon from electron beam grown rods / EBFZ	2016-10-01 - 2017-03-31	2016-05-03	SME-1	SIA KEPP EU
Knowledge Complexity / K-PLEX	2017-01-01 - 2018-03-31	2016-04-12	RIA	TILDE SIA
Big Data Value ecosystem / BDVe	2017-01-01 - 2020-12-31	2016-04-12	CSA	TILDE SIA
Advancing fail-aware, fail-safe, and fail-operational electronic components, systems, and architectures for fully automated driving to make future mobility safer, affordable, and end-user acceptable. / AutoDrive	2017-05-01 - 2020-06-30	2016-09-20	JTI- ECSEL- RIA	ELEKTRONIKAS UN DATORZINATNU INSTITUTS
Intelligent Motion Control Platform for Smart Mechatronic Systems / I-MECH	2017-06-01 - 2020-05-31	2016-09-20	JTI- ECSEL- RIA	ELEKTRONIKAS UN DATORZINATNU INSTITUTS
COMPACT: FROM RESEARCH TO POLICY THROUGH RAISING AWARENESS OF THE STATE OF THE ART ON SOCIAL MEDIA AND CONVERGENCE / COMPACT	2017-10-01 - 2020-09-30	2016-11-08	CSA	LATVIJAS UNIVERSITATE
Building the Legal Knowledge Graph for Smart Compliance Services in Multilingual Europe / Lynx	2017-12-01 - 2020-11-30	2017-04-25	IA	TILDE SIA
SAMS - International Partnership on Innovation in Smart Apiculture Management Services (Apiculture = Beekeeping) / SAMS	2018-01-01 - 2020-12-31	2017-04-25	IA	LATVIJAS LAUKSAIMNIECIBAS UNIVERSITATE
Development, Operation, and Quality Assurance of Trustworthy Smart IoT Systems / ENACT	2018-01-01 - 2021-03-31	2017-04-25	RIA	BALTIC OPEN SOLUTIONS CENTER ELEKTRONIKAS UN DATORZINATNU INSTITUTS
Programmable Systems for Intelligence in Automobiles / PRYSTINE	2018-05-01 - 2021-04-30	2017-09-21	JTI- ECSEL- RIA	ELEKTRONIKAS UN DATORZINATNU INSTITUTS
Aggregate Farming in the Cloud / AFarCloud	2018-09-01 - 2021-08-31	2017-09-21	JTI- ECSEL- RIA	LATVIJAS UNIVERSITATES MATEMATIKAS UN INFORMATIKAS INSTITUTS
Cost-effective, Multilingual, Privacy-driven voice-enabled Services / COMPRISE	2018-12-01 - 2021-11-30	2018-04-17	RIA	TILDE SIA
TRANS-NATIONAL COOPERATION AMONG ICT	2019-01-01 - 2020-12-31	2018-06-19	CSA	VALSTS IZGLITIBAS ATTISTIBAS AGENTURA

NCPS - IDEALIST2020 / Idealist2020				
Autonomous Patch for Real-Time Detection of Infectious Disease / A-Patch	2019-01-01 - 2021-12-31	2018-04-17	RIA	LATVIJAS UNIVERSITATE
A European AI On Demand Platform and Ecosystem / AI4EU	2019-01-01 - 2021-12-31	2018-04-17	RIA	TILDE SIA
European Language Grid / ELG	2019-01-01 - 2021-12-31	2018-04-17	IA	TILDE SIA
A Pan-European Network of Robotics DIHs for Agile Production / DIH <sup>2</sup>	2019-01-01 - 2022-12-31	2018-04-17	IA	NODIBINAJUMS VENTSPILS AUGSTO TEHNOLOGIJU PARKS
High-Power Ultrafast LaSers using Tapered Double-Clad Fibre / PULSE	2019-01-01 - 2022-12-31	2018-04-17	RIA	CERAM OPTEC SIA
Digital Technologies, Advanced Robotics and increased Cyber-security for Agile Production in Future European Manufacturing Ecosystems / TRINITY	2019-01-01 - 2022-12-31	2018-04-17	IA	ELEKTRONIKAS UN DATORZINATNU INSTITUTS
Strategic programs for advanced research and technology in Europe / SPARTA	2019-02-01 - 2022-01-31	2018-05-29	RIA	LATVIJAS MOBILAIS TELEFONS SIA
Advanced packaging for photonics, optics and electronics for low cost manufacturing in Europe / APPLAUSE	2019-05-01 - 2022-04-30	2018-09-20	JTI-ECSEL-IA	ELEKTRONIKAS UN DATORZINATNU INSTITUTS
Artificial Intelligence for Digitizing Industry / AI4DI	2019-05-01 - 2022-05-31	2018-09-20	JTI-ECSEL-RIA	ELEKTRONIKAS UN DATORZINATNU INSTITUTS
Arrowhead Tools for Engineering of Digitalisation Solutions / Arrowhead Tools	2019-05-01 - 2022-07-31	2018-09-20	JTI-ECSEL-IA	ELEKTRONIKAS UN DATORZINATNU INSTITUTS
VIZTA sounds for Vision, Identification, with Z-sensing Technologies and key Applications. / VIZTA	2019-05-01 - 2022-10-31	2018-09-20	JTI-ECSEL-IA	ELEKTRONIKAS UN DATORZINATNU INSTITUTS
Framework of key enabling technologies for safe and autonomous drones' applications / COMP4DRONES	2019-10-01 - 2022-09-30	2018-09-20	JTI-ECSEL-RIA	LATVIJAS UNIVERSITATES MATEMATIKAS UN INFORMATIKAS INSTITUTS LATVIJAS MOBILAIS TELEFONS SIA ELEKTRONIKAS UN DATORZINATNU INSTITUTS
Agricultural Interoperability and Analysis System / ATLAS	2019-10-01 - 2022-09-30	2018-11-14	IA	DARZKOPIBAS INSTITUTS LATVIJAS AUGLKOPJU ASOCIACIJA LATVIJAS BIOLOGISKAS LAUKSAIMNIECIBAS ASOCIACIJA
Supporting deep-tech based innovative market players to uptake opportunities, upgrade performance and upscale their business / STARTUP3	2020-01-01 - 2021-12-31	2019-03-28	IA	LATVIJAS INFORMACIJAS TEHNOLOGIJU KLASTERIS

X-Europe / XEUROPE	2020-01-01 - 2022-02-28	2019-03-28	IA	NODIBINAJUMS TECHCHILL
Boosting Widening Digital Innovation Hubs / BOWI	2020-01-01 - 2023-06-30	2019-04-02	IA	CIVITTA LATVIJA LATVIJAS INFORMACIJAS TEHNOLOGIJU KLASTERIS
Trustable architectures with acceptable residual risk for the electric, connected and automated cars / ArchitectECA2030	2020-05-01 - 2023-04-30	2019-09-18	JTI- ECSEL- RIA	TERAGLOBUS LATVIA SIA
Challenging environments tolerant Smart systems for IoT and AI / CHARM	2020-06-01 - 2023-05-31	2019-09-18	JTI- ECSEL-IA	SAF TEHNIKA AS RIGAS TEHNISKA UNIVERSITATE
5th Generation connected and automated mobility cross-border EU trials / 5G-ROUTES	2020-09-01 - 2023-08-31	2019-11-13	IA	LATVIJAS MOBILAIS TELEFONS SIA AKCIJU SABIEDRIBA PASAZIERU VILCIENS
HumanE AI Network / HumanE-AI-Net	2020-09-01 - 2023-08-31	2019-11-13	RIA	TILDE SIA
Grow your manufacturing business / Better Factory	2020-10-01 - 2024-09-30	2019-11-13	IA	LATVIJAS PARTIKAS UZNEMUMU FEDERACIJA
National Competence Centres in the framework of EuroHPC / EUROCC	? - ?	2019-11-14	EuroHPC- RIA	RIGAS TEHNISKA UNIVERSITATE
DIH-World - Accelerating deployment and maturity of DIHs for the benefit of Digitisation of European SMEs / DIH-World	? - ?	2019-11-13	IA	ELEKTRONIKAS UN DATORZINATNU INSTITUTS
Stream Learning for Multilingual Knowledge Transfer / SELMA	? - ?	2020-01-16	RIA	LATVIJAS UNIVERSITATES MATEMATIKAS UN INFORMATIKAS INSTITUTS
<b>EU.2.1.2. - LEIT-NMP - Nanotechnologies</b>				
Industrial Scale Production of Innovative nanomaterials for printed Devices / INSPIRED	2015-01-01 - 2018-12-31	2014-05-06	IA	EUROLCDS SIA
Market Entry Feasibility Project for Next Generation Rubber / Project NGR M	2015-05-01 - 2015-08-31	2014-12-17	SME-1	SIA RUBBER PRODUCTS
ERA-NET ON NANOMEDICINE / EuroNanoMed III	2016-11-01 - 2021-10-31	2016-01-21	ERA- NET- Cofund	VALSTS IZGLITIBAS ATTISTIBAS AGENTURA
Point-of-Care implementation of TB testing with ultra-fast Local Heating PCR / PITBUL	2017-12-01 - 2020-05-31	2017-01-19	RIA	LATVIJAS UNIVERSITATE
<b>EU.2.1.3. - LEIT-ADVMAT - Advanced materials</b>				
ERA-NET for materials research and innovation / M-ERA.NET 2	2016-03-01 - 2021-02-28	2015-03-26	ERA- NET- Cofund	VALSTS IZGLITIBAS ATTISTIBAS AGENTURA
High performance MOF and IPOSS enhanced membrane systems as next generation CO2 capture technologies / GENESIS	2018-01-01 - 2021-12-31	2017-05-04	IA	SCHWENK LATVIJA SIA
Innovative and affordable service for the Preventive Conservation monitoring of individual Cultural	2019-03-01 - 2022-02-28	2018-06-28	IA	LATVIJAS VALSTS KOKSNES KIMIJAS INSTITUTS

Artefacts during display, storage, handling and transport / CollectionCare				LATVIJAS ETNOGRAFISKAIS BRIVDABAS MUZEJS
Liquid-Processed Solid-State Li-metal Battery: development of upscale materials, processes and architectures / SOLiDIFY	2020-01-01 - 2023-12-31	2019-04-25	RIA	SIDRABE VACUUM SIA
Strategic and targeted support to incentivise talented newcomers to NMP projects under Horizon Europe / FIT-4-NMP	2021-01-01 - 2023-12-31	2020-02-05	CSA	LATVIJAS TEHNOLOGISKAIS CENTRS NODIBINAJUMS
<b>EU.2.1.4. - LEIT-BIOTECH - Biotechnology</b>				
Feasibility study for registration of medicine RIGVIR with the European Medicine Agency / RIGVIR	2016-08-01 - 2017-01-31	2016-05-03	SME-1	SABIEDRIBA AR IEROBEZOTU ATBILDIBU LATIMA
Cofund on Biotechnologies / ERA CoBioTech	2016-12-01 - 2021-11-30	2016-01-21	ERA-NET-Cofund	VALSTS IZGLITIBAS ATTISTIBAS AGENTURA
<b>EU.2.1.5. - LEIT-ADVMANU - Advanced manufacturing and processing</b>				
EuroNanoForum 2015 / ENF2015	2014-07-01 - 2015-09-30	2014-05-06	CSA	LATVIJAS UNIVERSITATE
Mobilization of innovative design tools for refurbishing of buildings at district level / MODER	2015-09-01 - 2018-08-31	2015-02-04	IA	REM PRO SIA
Quality management for building performance - improving energy performance by life cycle quality management / QUANTUM	2016-01-01 - 2019-12-31	2015-02-04	IA	EKODOMA
Building and district thermal retrofit and management solutions / THERMOSS	2016-09-01 - 2020-02-29	2016-01-21	IA	RIGAS TEHNISKA UNIVERSITATE
MANUfacturing ecoSystem of QUALified Resources Exchange / MANU-SQUARE	2018-01-01 - 2020-12-31	2017-05-04	RIA	SIA ICOTTON
CO2-based Electrosynthesis of ethylene oXIDE / CO2EXIDE	2018-01-01 - 2020-12-31	2017-01-19	RIA	SIA SCHAEFFLER BALTIC LATVIJAS UNIVERSITATES CIETVIELU FIZIKAS INSTITUTS
Lightweight switchable smart solutions for energy saving large windows and glass fa?ades / Switch2save	2019-10-01 - 2023-09-30	2019-02-21	IA	SIA AGL TECHNOLOGIES
<b>EU.2.1.6. - LEIT-SPACE - Space</b>				
Pre-Operational Marine Service Continuity in Transition towards Copernicus / MyOcean FO	2014-10-01 - 2015-05-31	2014-02-12	CSA	LATVIJAS UNIVERSITATE
Cooperation Of Space NCPs as a Means to Optimise Services under Horizon 2020 / COSMOS2020	2015-01-01 - 2019-05-31	2014-03-26	CSA	RIGAS TEHNISKA UNIVERSITATE
Enhanced Satellite Laser Ranging System / EO-SLR	2015-10-01 - 2016-03-31	2015-06-17	SME-1	HEE PHOTONIC LABS

On Request Mobile Testing Facility "Metamorphosis" / Metamorphosis	2017-05-01 - 2017-10-31	2017-02-15	SME-1	CRYOGENIC AND VACUUM SYSTEMS
SME-led Space Portal for Europe / HATCH	2017-11-01 - 2019-06-30	2017-03-01	CSA	WIT BERRY
Continuation of the Cooperation of Space NCPs as a Means to Optimise Services under Horizon 2020 / COSMOS2020plus	2019-06-01 - 2020-12-31	2018-11-22	CSA	RIGAS TEHNISKA UNIVERSITATE
EU.2.2. - RISKFINANCE - Access to risk finance				
Boosting Investment Readiness of SMEs and Small Midcaps - InvestHorizon / InvestHorizon	2014-12-01 - 2017-05-31	2014-04-15	CSA	LATVIJAS TIRDZNIECIBAS UN RUPNIECIBAS KAMERA
This 3 day conference will be focused to the financial instruments, facilities and measures launched under Horizon 2020 to enhance access to finance for research, innovation and SMEs. / First InnovativeWeek	2015-02-02 - 2015-12-01	2015-01-28	CSA	ATTISTIBAS FINANSU INSTITUCIJA
<b>EU.2.3. - INNOSUPSME - Innovation in SMEs</b>				
SME Instrument for Innovative Companies from Latvia / InnoSME-LV	2014-07-01 - 2014-12-31	2014-04-11	CSA	LATVIJAS TEHNOLOGISKAIS CENTRS NODIBINAJUMS
Raising Innovation Capacity for Innovative Companies from Latvia (2015-2016) / InnoSME-LV-2015-2016	2015-01-01 - 2016-12-31	2014-12-18	H2020-EEN-SGA	LATVIJAS TEHNOLOGISKAIS CENTRS NODIBINAJUMS LATVIJAS INVESTICIJU UN ATTISTIBASAGENTURA
Raising Innovation Capacity for Innovative Companies from Latvia (2017-2018) / InnoSME-LV-2017-2018	2017-01-01 - 2018-12-31	2016-08-30	H2020-EEN-SGA	LATVIJAS INVESTICIJU UN ATTISTIBASAGENTURA LATVIJAS TEHNOLOGISKAIS CENTRS NODIBINAJUMS
Pan-European Access for man. SME on tech. services for clean production through a Network of premier KET Technology Centres with one stop shop access incl. EEN and discourse with policy makers on RIS3 / KET4CleanProduction	2018-01-01 - 2021-04-30	2017-03-28	CSA	LATVIJAS TEHNOLOGISKAIS CENTRS NODIBINAJUMS
Advanced 3D augmented reality technology providing a more accurate, effective and efficient method of medical education / Anatomy Next	2018-06-01 - 2018-09-30	2018-02-06	SME-1	ANATOMY NEXT SIA
Prudenta: Electronic Solution for Safer Drugs / prudenta	2018-08-01 - 2019-01-31	2018-05-03	SME-1	SIA REPHINE BALTICUM
Bacterial Cellulose (and)- based Skin Repair material - BC / BC SKIN	2018-09-01 - 2019-02-28	2018-05-03	SME-1	PROBIOTIKA LV
Raising Innovation Capacity for Innovative Companies from Latvia (2019) / InnoSME-LV-2019	2019-01-01 - 2019-12-31	2018-06-05	H2020-EEN-SGA	LATVIJAS TEHNOLOGISKAIS CENTRS NODIBINAJUMS LATVIJAS INVESTICIJU UN ATTISTIBASAGENTURA



Greening the polyurethane industry through versatile and low cost eco-polyols / ECO-POL	2019-11-01 - 2020-04-30	2019-09-05	SME-1	SABIEDRIBA AR IEROBEZOTU ATBILDIBU POLYLABS
Raising Innovation Capacity for Innovative Companies from Latvia (2020-2021) / InnoSME-LV-2020-2021	2020-01-01 - 2021-12-31	2019-06-04	H2020-EEN-SGA	LATVIJAS INVESTICIJU UN ATTISTIBAS AGENTURA LATVIJAS TEHNOLOGISKAIS CENTRS NODIBINAJUMS
EU.3.1. - HEALTH - Health, demographic change and wellbeing				
ERA-NET rare disease research implementing IRDiRC objectives / E-Rare-3	2014-12-01 - 2020-11-30	2014-04-15	ERA-NET-Cofund	VALSTS IZGLITIBAS ATTISTIBAS AGENTURA LATVIJAS ZINATNU AKADEMIJA
ERA-NET: Aligning national/regional translational cancer research programmes and activities / TRANSCAN-2	2015-01-01 - 2020-12-31	2014-04-15	ERA-NET-Cofund	LATVIJAS ZINATNU AKADEMIJA VALSTS IZGLITIBAS ATTISTIBAS AGENTURA
High Level eHealth Conference 2015 / EHW15	2015-03-19 - 2015-08-18	2015-03-19	CSA	NACIONALAIS VESELIBAS DIENESTS
Towards the elimination of iodine deficiency and preventable thyroid-related diseases in Europe / EUthyroid	2015-06-01 - 2018-05-31	2014-08-19	RIA	LATVIJAS UNIVERSITATE
ERA-NET on cardiovascular diseases to implement joint transnational research projects and set up international cooperations / ERA-CVD	2015-10-01 - 2021-09-30	2015-02-23	ERA-NET-Cofund	VALSTS IZGLITIBAS ATTISTIBAS AGENTURA
ERA-NET for establishing synergies between the Joint Programming Initiative on Antimicrobial Resistance Research and Horizon 2020 / JPI-EC-AMR	2015-11-01 - 2020-10-31	2015-02-24	ERA-NET-Cofund	VALSTS IZGLITIBAS ATTISTIBAS AGENTURA
Developing new therapies for Batten disease / BATCure	2016-01-01 - 2019-06-30	2015-04-21	RIA	LATVIJAS ORGANISKAS SINTEZES INSTITUTS
INter-sectoral Health Environment Research for InnovaTions / INHERIT	2016-01-01 - 2019-12-31	2015-04-21	RIA	RIGAS DOME
Personalised Risk assessment in febrile illness to Optimise Real-life Management across the European Union / PERFORM	2016-01-01 - 2020-12-31	2015-04-21	RIA	RIGAS STRADINA UNIVERSITATE
ERA NET NEURON in the area of brain-related diseases and disorders of the nervous system / NEURON Cofund	2016-01-01 - 2022-06-30	2015-02-20	ERA-NET-Cofund	VALSTS IZGLITIBAS ATTISTIBAS AGENTURA
Transfer of Organisational innovations for Resilient, Effective, equitable, Accessible, sustainable and Comprehensive Health Services and Systems. / TO-REACH	2016-12-01 - 2020-11-30	2016-04-13	CSA	RIGAS STRADINA UNIVERSITATE LATVIJAS ZINATNES PADOME
European Human Biomonitoring Initiative / HBM4EU	2017-01-01 - 2021-12-31	2016-04-13	COFUND-EJP	RIGAS STRADINA UNIVERSITATE VALSTS IZGLITIBAS

				ATTISTIBAS AGENTURA LATVIJAS UNIVERSITATE
ERA-Net Cofund in Personalised Medicine / ERA PerMed	2017-12-01 - 2022-11-30	2017-04-11	ERA- NET- Cofund	VALSTS IZGLITIBAS ATTISTIBAS AGENTURA
Life Science Alliance: Closing Research and Innovation Divide in the EU / Alliance4Life	2018-01-01 - 2019-12-31	2017-04-11	CSA	LATVIJAS ORGANISKAS SINTEZES INSTITUTS
Testing the value of a novel strategic approach and its cost efficacy to improve the poor outcomes in Cardiogenic Shock / EURO SHOCK	2018-01-01 - 2022-12-31	2017-04-11	RIA	PAULA STRADINA KLINISKA UNIVERSITATES SLIMNICA
Screening of Gastric Cancer via Breath volatile organic compounds by Hybrid Sensing Approach / VOGAS	2019-01-01 - 2021-12-31	2018-04-17	RIA	LATVIJAS UNIVERSITATE
Strengthening training of academia in regulatory sciences and supporting regulatory scientific advice (STARS) / STARS	2019-01-01 - 2021-12-31	2018-04-18	CSA	ZALU VALSTS AGENTURA
European Joint Programme on Rare Diseases / EJP RD	2019-01-01 - 2023-12-31	2018-04-18	COFUND- EJP	VALSTS IZGLITIBAS ATTISTIBAS AGENTURA BERNU KLINISKA UNIVERSITATES SLIMNICA VALSTS SIA
ERA-NET to support the Joint Programming in Neurodegenerative Diseases strategic plan (JPND) / JPCOFUND2	2019-01-01 - 2023-12-31	2018-04-17	ERA- NET- Cofund	VALSTS IZGLITIBAS ATTISTIBAS AGENTURA
Patients-centered SurvivorShlp care plan after Cancer treatments based on Big Data and Artificial Intelligence technologies / PERSIST	2020-01-01 - 2023-02-28	2019-04-24	RIA	LATVIJAS UNIVERSITATE
Diagnosis and Management of Febrile Illness using RNA Personalised Molecular Signature Diagnosis / DIAMONDS	2020-01-01 - 2024-12-31	2019-04-16	IA	RIGAS STRADINA UNIVERSITATE
EUROPEAN REGIMEN ACCELERATOR FOR TUBERCULOSIS / ERA4TB	2020-01-01 - 2025-12-31	2019-05-15	JTI-IMI2- RIA	LATVIJAS ORGANISKAS SINTEZES INSTITUTS
Beyond 1M Genomes / B1MG	2020-06-01 - 2023-05-31	2019-11-13	CSA	LATVIJAS BIOMEDICINAS PETIJUMU UN STUDIJU CENTRS
X-eHealth: eXchanging electronic Health Records in a common framework / X-eHealth	2020-09-01 - 2022-08-31	2019-11-13	CSA	NACIONALAIS VESELIBAS DIENESTS
<b>EU.3.2. - FOOD - Food security, sustainable agriculture and forestry, marine and maritime and inland water research and the bioeconomy</b>				
Space for Agricultural Innovation / AGRISPIN	2015-03-01 - 2017-08-31	2014-06-26	CSA	LATVIJAS LAUKU KONSULTACIJU UN IZGLITIBAS CENTRS

Farming Tools for external nutrient Inputs and water Management / FATIMA	2015-03-01 - 2018-02-28	2014-06-26	RIA	BALTIC OPEN SOLUTIONS CENTER
Organic Knowledge Network Arable / OK-Net Arable	2015-03-01 - 2018-02-28	2014-06-25	CSA	EIROPAS LAUKSAIMNIECIBAS UN LAUKU KONSULTANTU ASOCIACIJA
Distributed, integrated and harmonised forest information for bioeconomy outlooks / DIABOLO	2015-03-01 - 2019-02-28	2014-06-26	RIA	LATVIJAS VALSTS MEZZINATNES INSTITUTS SILAVA
Effective Management of Pests and Harmful Alien Species - Integrated Solutions / EMPHASIS	2015-03-01 - 2019-02-28	2014-06-26	RIA	INTEGRETAS AUDZESANAS SKOLA
Sustainable oceans : our collective responsibility, our common interest. Building on real-life knowledge knowledge systems for developing interactive and mutual learning media / Respon-SEA-ble	2015-04-01 - 2019-03-31	2014-06-26	CSA	BALTIJAS VIDES FORUMS
Sustainable finance for sustainable agriculture and fisheries / SUFISA	2015-05-01 - 2019-04-30	2014-06-26	RIA	NODIBINAJUMS BALTIC STUDIES CENTRE
Combined Ultrasonic and Enzyme treatment of Lignocellulosic Feedstock as Substrate for Sugar Based Biotechnological Applications / US4GREENCHEM	2015-07-01 - 2019-06-30	2014-10-15	JTI-BBI-RIA	LATVIJAS VALSTS KOKSNES KIMIJAS INSTITUTS
Transfer of INNOvative techniques for sustainable WAter use in FERTigated crops / FERTINNOWA	2016-01-01 - 2018-12-31	2015-04-21	CSA	EIROPAS LAUKSAIMNIECIBAS UN LAUKU KONSULTANTU ASOCIACIJA
Data Driven Dairy Decisions 4 Farmers / 4D4F	2016-03-01 - 2019-02-28	2015-06-11	CSA	LATVIJAS ZINATNU AKADEMIJA
European Research Area on Sustainable Animal Production Systems / SusAn	2016-03-01 - 2021-02-28	2015-06-11	ERA-NET-Cofund	VALSTS IZGLITIBAS ATTISTIBAS AGENTURA
Small farms, small food businesses and sustainable food security / SALSA	2016-04-01 - 2020-07-31	2015-06-11	RIA	NODIBINAJUMS BALTIC STUDIES CENTRE
Demonstration of a cloud-based precision farming management system for a sustainable and intensive agriculture to secure long-term food supply in Europe - Phase II / AgriCloud P2	2016-05-01 - 2018-08-31	2015-11-25	SME-2	PRECISION FARMING
ERA-NET for Monitoring and Mitigation of Greenhouse Gases from Agri- and Silvi-Culture / ERA-GAS	2016-05-01 - 2021-04-30	2015-06-11	ERA-NET-Cofund	VALSTS IZGLITIBAS ATTISTIBAS AGENTURA
Innovative solutions for increasing efficiency and reducing environmental impacts of future wood supply / OnTrack	2016-09-01 - 2018-08-31	2016-02-17	IA	LATVIJAS VALSTS MEZZINATNES INSTITUTS SILAVA
Coordination of European Transnational Research in Organic	2016-12-01 - 2021-11-30	2016-02-17	ERA-NET-Cofund	AGRORESURSU UN EKONOMIKAS INSTITUTS

Food and Farming Systems Cofund / CORE Organic Cofund				
Peer-to-Peer Learning: Accessing Innovation through Demonstration / PLAID	2017-01-01 - 2019-06-30	2016-02-17	CSA	NODIBINAJUMS BALTIC STUDIES CENTRE EIROPAS LAUKSAIMNIECIBAS UN LAUKU KONSULTANTU ASOCIACIJA
Improve performance of organic agriculture by boosting organic seed and plant breeding efforts across Europe / LIVESEED	2017-06-01 - 2021-05-31	2016-09-13	RIA	AGRORESURSU UN EKONOMIKAS INSTITUTS
AgriLink. Agricultural Knowledge: Linking farmers, advisors and researchers to boost innovation. / AgriLink	2017-06-01 - 2021-05-31	2016-09-13	RIA	NODIBINAJUMS BALTIC STUDIES CENTRE
Fostering sustainable legume-based farming systems and agri-feed and food chains in the EU / LEGVALUE	2017-06-01 - 2021-05-31	2016-09-12	RIA	LATVIJAS LAUKU KONSULTACIJU UN IZGLITIBAS CENTRS
Rural-Urban Outlooks: Unlocking Synergies / ROBUST	2017-06-01 - 2021-05-31	2016-09-13	RIA	TUKUMA NOVADA DOME NODIBINAJUMS BALTIC STUDIES CENTRE
Diversification through Rotation, Intercropping, Multiple cropping, Promoted with Actors and value-Chains Towards Sustainability / DiverIMPACTS	2017-06-01 - 2022-05-31	2016-09-13	RIA	EIROPAS LAUKSAIMNIECIBAS UN LAUKU KONSULTANTU ASOCIACIJA
Marginal lands for Growing Industrial Crops: Turning a burden into an opportunity / MAGIC	2017-07-01 - 2021-06-30	2016-09-13	RIA	LATVIJAS VALSTS MEZZINATNES INSTITUTS SILAVA
ForestValue - Innovating forest-based bioeconomy / ForestValue	2017-10-01 - 2022-09-30	2017-02-14	ERA-NET-Cofund	LATVIJAS LAUKSAIMNIECIBAS UN MEZA ZINATNU AKADEMIJA BIEDRIBA VALSTS IZGLITIBAS ATTISTIBAS AGENTURA
Networking European Farms to Enhance Cross Fertilisation and Innovation Uptake through Demonstration / NEFERTITI	2018-01-01 - 2021-12-31	2017-02-13	CSA	EIROPAS LAUKSAIMNIECIBAS UN LAUKU KONSULTANTU ASOCIACIJA
ERA-NET Cofund on Sustainable Crop Production / SusCrop	2018-01-01 - 2022-12-31	2017-02-14	ERA-NET-Cofund	LATVIJAS LAUKSAIMNIECIBAS UN MEZA ZINATNU AKADEMIJA BIEDRIBA
Living Lab research concept in Rural Areas / LIVERUR	2018-05-01 - 2021-04-30	2017-09-13	RIA	ZEMNIEKU SAEIMA
Understanding and improving the sustainability of agro-ecological farming systems in the EU / UNISECO	2018-05-01 - 2021-04-30	2017-09-13	RIA	BALTIJAS VIDES FORUMS
RustWatch: A European early-warning system for wheat rust diseases / RUSTWATCH	2018-05-01 - 2022-04-30	2017-09-13	RIA	LATVIJAS AUGU AIZSARDZIBAS PETNIECIBAS CENTRS LATVIJAS

				LAUKSAIMNIECIBAS UNIVERSITATE
Monitoring the Bioeconomy / BioMonitor	2018-06-01 - 2022-05-31	2017-09-13	RIA	LATVIJAS LAUKSAIMNIECIBAS UNIVERSITATE
Novel Products for Construction and Automotive Industries Based on Bio Materials and Natural Fibres / ReInvent	2018-06-01 - 2022-05-31	2017-09-07	JTI-BBI- IA-DEMO	RITOLS SIA
Towards the joint Baltic Sea and the North Sea research and innovation programme / BANOS CSA	2018-11-01 - 2021-04-30	2018-02-13	CSA	VALSTS IZGLITIBAS ATTISTIBAS AGENTURA
Connecting the dots to unleash the innovation potential for digital transformation of the European agri- food sector / SmartAgriHubs	2018-11-01 - 2022-10-31	2018-02-13	IA	ZEMNIEKU SAEIMA BALTIC OPEN SOLUTIONS CENTER SABIEDRIBA AR IEROBEZOTU ATBILDIBU SUNGIS
Disseminating Innovative Solutions for Antibiotic Resistance Management / DISARM	2019-01-01 - 2021-12-31	2018-02-09	CSA	LATVIJAS LAUKSAIMNIECIBAS UNIVERSITATE
Bio-based strategies and roadmaps for enhanced rural and regional development in the EU / BE-Rural	2019-04-01 - 2022-03-31	2018-02-13	CSA	LATVIJAS VALSTS MEZZINATNES INSTITUTS SILAVA
CONtract SOLutions for Effective and lasting delivery of agri- environmental-climate public goods by EU agriculture and forestry / CONSOLE	2019-05-01 - 2022-04-30	2018-09-11	RIA	ZEMNIEKU SAEIMA
Sino-EU Soil Observatory for intelligent Land Use Management / SIEUSOIL	2019-06-01 - 2022-05-31	2018-09-11	RIA	BALTIC OPEN SOLUTIONS CENTER
Future Oriented Collaborative Policy Development for Rural Areas and People / PoliRural	2019-06-01 - 2022-05-31	2018-09-11	RIA	AGRORESURSU UN EKONOMIKAS INSTITUTS BALTIC OPEN SOLUTIONS CENTER LATVIJAS LAUKU FORUMS VIDZEMES PLANOSANAS REGIONS
Digitisation: Economic and Social Impacts in Rural Areas / DESIRA	2019-06-01 - 2023-05-31	2018-09-11	RIA	ZEMNIEKU SAEIMA NODIBINAJUMS BALTIC STUDIES CENTRE
Advancing Sustainable Circular Bioeconomy in Central and Eastern European countries: BIOEASTsUP / BIOEASTsUP	2019-10-01 - 2022-09-30	2019-01-23	CSA	RIGAS TEHNISKA UNIVERSITATE LATVIJAS LAUKSAIMNIECIBAS UNIVERSITATE
reSilient fARminG by Adaptive microclimaTe managEment / STARGATE	2019-10-01 - 2023-09-30	2018-09-11	RIA	VIDZEMES AUGSTSKOLA VIDZEMES PLANOSANAS REGIONS
A safe DIVA vaccine for African Swine Fever control and eradication / VACDIVA	2019-10-01 - 2023-09-30	2019-01-23	IA	PARTIKAS DROSIBAS, DZIVNIEKU VESELIBAS UN VIDES ZINATNISKAIS INSTITUTSBIOR

INTERNATIONAL COORDINATION OF RESEARCH ON INFECTIOUS ANIMAL DISEASES / ICRAD	2019-10-01 - 2024-09-30	2019-01-23	ERA-NET-Cofund	VALSTS IZGLITIBAS ATTISTIBAS AGENTURA
ERA-NET Cofund on ICT-enabled agri-food systems / ICT-AGRI-FOOD	2019-10-01 - 2024-09-30	2019-01-23	ERA-NET-Cofund	VALSTS IZGLITIBAS ATTISTIBAS AGENTURA
Boosting Innovation in Organic FRUIT production through strong knowledge NETworks / BIOFRUITNET	2019-11-01 - 2022-10-31	2019-01-23	CSA	LATVIJAS BIOLOGISKAS LAUKSAIMNIECIBAS ASOCIACIJA
Connecting advisers to boost interactive innovation in agriculture and forestry / i2connect	2019-11-01 - 2024-10-31	2019-01-23	CSA	EIROPAS LAUKSAIMNIECIBAS UN LAUKU KONSULTANTU ASOCIACIJA LATVIJAS LAUKU KONSULTACIJU UN IZGLITIBAS CENTRS
SMART agriculture for innovative vegetable crop PROTECTION: harnessing advanced methodologies and technologies / SMARTPROTECT	2020-01-01 - 2022-12-31	2019-01-23	CSA	DARZKOPIBAS INSTITUTS
Towards climate-smart sustainable management of agricultural soils / EJP SOIL	2020-02-01 - 2025-01-31	2019-01-23	COFUND-EJP	LATVIJAS UNIVERSITATE
Optimal strategies to retAIN and re-use water and nutrients in small agricultural catchments across different soil-climatic regions in Europe / OPTAIN	2020-09-01 - 2025-08-31	2019-09-04	RIA	DAUGAVPILS UNIVERSITATE
<b>EU.3.3. - ENERGY - Secure, clean and efficient energy</b>				
Development and advanced prefabrication of innovative, multifunctional building envelope elements for MODular RETrofitting and CONNECTIONS / MORE-CONNECT	2014-12-01 - 2019-05-31	2014-03-20	IA	RIGAS TEHNISKA UNIVERSITATE LATVIAN WOOD CONSTRUCTION CLUSTER ZEMGALES TEHNOLOGISKAIS CENTRS
ERA-Net Smart Grids Plus: support deep knowledge sharing between regional and European Smart Grids initiatives / ERANet SmartGridPlus	2015-01-30 - 2020-04-29	2014-05-07	ERA-NET-Cofund	VALSTS IZGLITIBAS ATTISTIBAS AGENTURA LATVIJAS ZINATNU AKADEMIJA
save@work - The Energy Saving Contest for Public Authorities / Save at Work	2015-02-01 - 2017-09-30	2014-06-05	CSA	EKODOMA
Capacity Building on Energy Performance Contracting in European Markets in Transition / EnPC-INTRANS	2015-03-01 - 2017-02-28	2014-06-05	CSA	BIEDRIBA ZEMGALES REGIONALA ENERGETIKAS AGENTURA
A multi-stakeholder Regional Action Network as a living structural base to effectively help define and implement deep energy efficient	2015-03-01 - 2017-02-28	2014-06-05	CSA	LATVIJAS ILGTSPEJIGAS BUVNIECIBAS PADOME

building renovation at local, national and European level. / BUILD UPON				
Facilitating Multi-level governance for energy efficiency / multEE	2015-03-01 - 2017-08-31	2014-06-05	CSA	FIZIKALAS ENERGETIKAS INSTITUTS
Save your bUildINg by SavINg Energy – towards 2020m2 of deeply renovated multifamily residential buildings / SUNShINE	2015-03-01 - 2020-02-29	2014-06-04	CSA	EKODOMA RENESCO SIA ECO.NRG SIA SIA SALASPILS SILTUMS EKU SAGLABASANAS UN ENERGOTAUPIBAS BIROJS RIGAS TEHNISKA UNIVERSITATE
PhD on Innovation Pathways for TES / INPATH-TES	2015-05-01 - 2018-04-30	2014-09-10	CSA	RIGAS TEHNISKA UNIVERSITATE
Realising Value from Electricity Markets with Local Smart Electric Thermal Storage Technology / RealValue	2015-06-01 - 2018-05-31	2014-05-07	IA	RIGAS TEHNISKA UNIVERSITATE
GreenS – Green public procurement supporters for innovative and sustainable institutional change / GreenS	2015-06-01 - 2018-05-31	2014-06-05	CSA	RIGAS DOME RIGAS PLANOSANAS REGIONS
Concerted Action EPBD IV / CAIV_EPBD	2015-10-01 - 2018-09-30	2015-05-09	CSA	EKONOMIKAS MINISTRIJA
BiogasAction: Promotion of sustainable biogas production in EU / BiogasAction	2016-01-01 - 2018-12-31	2015-05-05	CSA	EKODOMA
A SYSTEMATIC APPROACH FOR INSPIRING TRAINING ENERGY-SPATIAL-SOCIOECONOMIC SUSTAINABILITY TO PUBLIC AUTHORITIES / INTENSSS-PA	2016-02-01 - 2018-07-31	2015-06-03	CSA	BALTIJAS VIDES FORUMS ZEMGALES PLANOSANAS REGIONS
ODYSSEE-MURE, a decision support tool for energy efficiency policy evaluation. / ODYSSEE-MURE	2016-02-01 - 2018-07-31	2015-06-04	CSA	FIZIKALAS ENERGETIKAS INSTITUTS
Market Surveillance Action for Tyres 2015 / MSTYR15	2016-03-01 - 2018-06-30	2015-06-04	CSA	CONSUMER RIGHTS PROTECTION CENTRE
Assistant Buildings' addition to Retrofit, Adopt, Cure And Develop the Actual Buildings up to zeRo energy, Activating a market for deep renovation / ABRACADABRA	2016-03-01 - 2019-02-28	2015-06-04	CSA	RENESCO SIA
Partnership for New Energy Leadership 2050 / PANEL 2050	2016-03-01 - 2019-02-28	2015-06-04	CSA	VIDZEMES PLANOSANAS REGIONS
THERMOS (Thermal Energy Resource Modelling and Optimisation System) / THERMOS	2016-10-01 - 2020-06-30	2016-01-21	RIA	JELGAVAS DOME BIEDRIBA ZEMGALES REGIONALA ENERGETIKAS AGENTURA VIDES INVESTICIJU FONDS SIA
Concerted Action supporting the transposition and implementation of Directive 2009/28/EC on the	2016-10-01 - 2020-09-30	2016-04-15	CSA	EKONOMIKAS MINISTRIJA

promotion of the use of energy from renewable sources (RES Directive) / CA-RES3				
Identification of legal rules and administrative processes applicable to Fuel Cell and Hydrogen technologies' deployment, identification of legal barriers and advocacy towards their removal. / HyLAW	2017-01-01 - 2019-03-31	2016-05-03	JTI-FCH2-CSA	LATVIJAS UDENRAZA ASOCIACIJA
Save your bUildiNg by SavINg Energy. Begin to move more quickly / Accelerate SUNShINE	2017-04-01 - 2021-03-31	2016-09-15	CSA	BAUSKAS NOVADA ADMINISTRACIJA RIGAS TEHNISKA UNIVERSITATE EKU SAGLABASANAS UN ENERGETIKAS BIROJS JURMALAS PILSETAS DOME ADAZU NOVADA DOME TUKUMA NOVADA DOME EKODOMA
Concerted Action EED - Support to Member States and participating countries for the implementation of the Energy Efficiency Directive / CA-EED 2	2017-04-15 - 2021-04-14	2016-09-29	CSA	EKONOMIKAS MINISTRIJA
Integrated solutionS for ambitiOus energy refurbishment of priVATE housing / INNOVATE	2017-06-01 - 2020-05-31	2016-09-15	CSA	RIGA MUNICIPAL AGENCY "RIGA ENERGY AGENCY"
Quality certification frameworks for Energy Efficiency services to scale up responsible investment in the building sector / QualitEE	2017-06-01 - 2020-06-30	2016-09-15	CSA	EKODOMA
Energy Efficiency Compliant Products 2 / EEPLIANT2	2017-09-01 - 2020-02-29	2016-09-14	CSA	CONSUMER RIGHTS PROTECTION CENTRE
Winning social acceptance for wind energy in wind energy scarce regions / WinWind	2017-10-01 - 2020-03-31	2017-01-05	CSA	FIZIKALAS ENERGETIKAS INSTITUTS VIDES INVESTICIJU FONDS SIA
Energy management competition for local authorities for uptake and enhance of Sustainable Energy and Climate Action Plans / COMPETE4SECAP	2017-10-01 - 2020-09-30	2016-09-15	CSA	EKODOMA
Pan-European system with an efficient coordinated use of flexibilities for the integration of a large share of RES / EU-SysFlex	2017-11-01 - 2021-10-31	2017-02-14	IA	AKCIJU SABIEDRIBA AUGSTSPRIEGUMA TIKLS
Putting regions on track for carbon neutrality by 2050 / C-Track 50	2018-03-01 - 2021-02-28	2017-06-07	CSA	RIGAS PLANOSANAS REGIONS
Multi stakeholder and governance approach for SECAP development and implementation / PentaHelix	2018-03-01 - 2021-02-28	2017-06-07	CSA	JEKABPILS PILSETAS PASVALDIBA BIEDRIBA ZEMGALES REGIONALA ENERGETIKAS AGENTURA



Taking European EnergyManagers to next efficiency levels by implementing energy audit recommendations / EUREMnext	2018-03-01 - 2021-02-28	2017-06-07	CSA	LATVIJAS TIRDZNIECIBAS UN RUPNIECIBAS KAMERA
Improving the performance of district heating systems in Central and East Europe / KeepWarm	2018-04-01 - 2020-09-30	2017-06-07	CSA	BIEDRIBA ZEMGALES REGIONALA ENERGETIKAS AGENTURA
Concerted Action EPBD V / CAV_EPBD	2018-05-01 - 2022-04-30	2018-02-20	CSA	EKONOMIKAS MINISTRIJA
Sun coupled innovative Heat pumps / SunHorizon	2018-10-01 - 2022-09-30	2018-02-13	IA	RIGAS TEHNISKA UNIVERSITATE
Connecting Energy National Contact Points in a pro-active network under Societal Challenge 3 'Secure, clean and efficient energy' in Horizon 2020 / C-Energy 2020 V2	2019-01-01 - 2020-06-30	2018-07-03	CSA	VALSTS IZGLITIBAS ATTISTIBAS AGENTURA
TSO-DSO-Consumer INTERFACE aRchitecture to provide innovative grid services for an efficient power system / INTERRFACE	2019-01-01 - 2022-12-31	2018-04-05	IA	RIGAS TEHNISKA UNIVERSITATE AKCIJU SABIEDRIBA AUGSTSPRIEGUMA TIKLS
Solutions to Tackle Energy Poverty / STEP	2019-06-01 - 2021-11-30	2018-09-13	CSA	LATVIJAS PATERETAJU INTERESU AIZSTAVIBAS ASOCIACIJA
Monitoring EU energy efficiency first principle and policy implementation / ODYSSEE-MURE	2019-06-01 - 2021-11-30	2018-09-13	CSA	FIZIKALAS ENERGETIKAS INSTITUTS
REnewable GAs TRAdE Centre in Europe / REGATRACE	2019-06-01 - 2022-05-31	2018-12-11	CSA	LATVIJAS BIOGAZES ASOCIACIJA
New Label driving supply and demand of energy efficient products / LABEL 2020	2019-06-01 - 2022-11-30	2018-09-13	CSA	EKODOMA
Energy Efficiency Compliant Products 3 / EEPLIANT3	2019-06-01 - 2023-05-31	2018-08-17	CSA	CONSUMER RIGHTS PROTECTION CENTRE
Financing scheme for Energy Efficiency and Renewable energy Guaranteed in Deep renovations of building stock / FinEERGo-Dom	2019-06-01 - 2023-05-31	2018-09-13	CSA	EKU SAGLABASANAS UN ENERGOAUIPIBAS BIROJS
Connecting Obligated Parties to Adopt Innovative Schemes towards Energy Poverty Alleviation / SocialWatt	2019-09-01 - 2022-08-31	2018-09-13	CSA	SIA FORTUM JELGAVA
Improving Cold Chain Energy Efficiency / ICCEE	2019-09-01 - 2022-08-31	2018-09-13	CSA	RIGAS TEHNISKA UNIVERSITATE
High-quality Energy Performance Assessment and Certification in Europe Accelerating Deep Energy Renovation (QualDeEPC) / QualDeEPC	2019-09-01 - 2022-08-31	2018-09-13	CSA	EKODOMA
Digital Global Biogas Cooperation / DiBiCoo	2019-10-01 - 2022-06-30	2018-12-11	CSA	LATVIJAS LAUKSAIMNIECIBAS UNIVERSITATE
AmsTERdam BiLbao cItizen drivEn smaRt cities / ATELIER	2019-11-01 - 2024-10-31	2019-02-05	IA	RIGA MUNICIPAL AGENCY "RIGA ENERGY AGENCY"

Empowering Energy Poor Citizens through Joint Energy Initiatives / POWERPOOR	2020-09-01 - 2023-08-31	2019-09-10	CSA	BIEDRIBA ZEMGALES REGIONALA ENERGETIKAS AGENTURA
UP-lifting Communities: Structuring collective Action for Sustainable local Transition and Identifying Regulatory Solutions for adopting frontier technologies and disruptive business models / UP-STAIRS	2020-09-01 - 2023-08-31	2019-09-10	CSA	EKU SAGLABASANAS UN ENERGOTAUPIBAS BIROJS
Central and Eastern European Sustainable Energy Union / CESEU	2020-11-01 - 2023-10-31	2019-09-10	CSA	VIDZEMES PLANOSANAS REGIONS
Community Energy for the uptake of RES in the electricity sector. Connecting long-term visions with short-term actions / COME RES	? - ?	2019-12-11	CSA	FIZIKALAS ENERGETIKAS INSTITUTS VIDES INVESTICIJU FONDS SIA
ENERGY EFFICIENCY SUBSCRIPTION FOR DEEP RENOVATION WITH PERFORMANCE GUARANTEE / EUROPA	? - ?	2020-01-15	CSA	EKU SAGLABASANAS UN ENERGOTAUPIBAS BIROJS
RoundBaltic - Promotion of Smart Finance for Smart Buildings in the Baltic Region with focus on Poland, Latvia and Denmark / RoundBaltic	? - ?	2020-01-15	CSA	VIDES INVESTICIJU FONDS SIA
One Network for Europe / OneNet	? - ?	2020-01-29	IA	AKCIJU SABIEDRIBA SADALES TIKLS AKCIJU SABIEDRIBA AUGSTSPRIEGUMA TIKLS
Modular Big Data Applications for Holistic Energy Services in Buildings / MATRYCS	? - ?	2020-01-15	IA	VIDES INVESTICIJU FONDS SIA
<b>EU.3.4. - TPT - Smart, green and integrated transport</b>				
EfficienSea 2 - Efficient, Safe and Sustainable Traffic at Sea / EfficienSea 2	2015-05-01 - 2018-04-30	2014-08-28	IA	LATVIJAS JURAS AKADEMIJA
New Bus ReFuelling for European Hydrogen Bus Depots / NewBusFuel	2015-06-01 - 2017-03-31	2014-11-06	JTI-FCH2-RIA	RIGAS SATIKSME SIA
European Transport Network Alliance 2020 / ETNA 2020	2016-01-01 - 2020-06-30	2015-04-23	CSA	RIGAS TEHNISKA UNIVERSITATE
The Mobi Charger, a novel mobile Electric Vehicle charging station that requires no installation costs, offers easy scalability and utility bill savings for users. / Mobi	2016-09-01 - 2016-12-31	2016-02-24	SME-1	SIA EMI ELECTRONICS
Green Fast Ferry - the world's first 30 knots battery powered Air Supported commuter ferry / GFF	2016-09-01 - 2018-10-31	2016-06-13	SME-2	BJB
A novel dual fuel system for diesel locomotive modernisation to CNG or LNG operation / DiGas Dual fuel	2016-12-01 - 2017-03-31	2016-09-07	SME-1	SABIEDRIBA AR IEROBEZOTU ATBILDIBU DIGAS
Development and demonstration of materials and manufacturing process	2017-01-01 - 2020-12-31	2015-11-18	JTI-CS2-IA	SIA AVIATEST LTD

for ultra high reliability electric Anti-ice/De-ice thermal layers for high strain rotor blades and helicopter airframe sections / NO-ICE-ROTOR				
Joint Initiative for hydrogen Vehicles across Europe / JIVE	2017-01-01 - 2022-12-31	2016-05-03	JTI-FCH2-IA	RIGAS SATIKSME SIA
Intelligent control system for railway points heating with supreme saving of electricity / IntelHeat	2017-12-01 - 2018-05-31	2017-09-05	SME-1	SIA KTN
Novel dual-fuel system for modernisation of air-polluting diesel locomotives to clean and efficient gas operation / NYSMART	2017-12-01 - 2020-11-30	2017-06-01	SME-2	SABIEDRIBA AR IEROBEZOTU ATBILDIBU DIGAS
Fast Rotorcraft / FRC GAM 2018	2018-01-01 - 2019-12-31	2017-10-31	JTI-CS2-IA	SIA CENTRE COMPOSITE
Joint Initiative for hydrogen Vehicles across Europe 2 / JIVE 2	2018-01-01 - 2023-12-31	2017-04-20	JTI-FCH2-IA	RIGAS SATIKSME SIA
Enabling the transferability of cycling innovations and assessment of its implications / Handshake	2018-09-01 - 2022-02-28	2017-10-19	IA	RIGA CITY COUNCIL
Infrastructure for the Future / infra4Dfuture	2018-10-01 - 2020-09-30	2018-04-04	CSA	VALSTS AKCIJU SABIEDRIBA LATVIJAS VALSTS CELI
Urban Accessibility and Connectivity / EN-UAC	2019-12-01 - 2024-11-30	2019-04-25	ERA-NET-Cofund	VALSTS IZGLITIBAS ATTISTIBAS AGENTURA
Fast Rotorcraft / GAM-2020-FRC	2020-01-01 - 2021-12-31	2019-10-01	JTI-CS2-IA	SIA CENTRE COMPOSITE SIA AVIATEST LTD
Aircraft Engine Valves Thermal Management with Advanced Loop Heat Pipe / EVAL	2020-06-01 - 2022-11-30	2019-09-02	JTI-CS2-IA	SABIEDRIBA AR IEROBEZOTU ATBILDIBU ALLATHERM
Enhanced Physical Internet-Compatible Earth-friendly freight Transportation answer / ePicenter	2020-06-01 - 2023-11-30	2019-09-12	RIA	AKCIJU SABIEDRIBA TRANSPORTA UN SAKARU INSTITUTS
<b>EU.3.5. - ENV - Climate action, environment, resource efficiency and raw materials</b>				
Robust Internal Thermal Insulation of Historic Buildings / RIBuild	2015-01-01 - 2020-06-30	2014-03-20	RIA	RIGAS TEHNISKA UNIVERSITATE
Enhancing ecoSystem sERVICES mApping for poLicy and Decision mAKing / ESMEALDA	2015-02-01 - 2018-07-31	2014-04-08	CSA	BALTIJAS VIDES FORUMS
Hybrid cooling system for semiconductor detectors of X- and Gamma- Rays / SEMICOOL-H	2015-04-01 - 2015-09-30	2014-09-24	SME-1	BALTIC SCIENTIFIC INSTRUMENTS SIA
Sustainable Integrated Management FOR the NEXUS of water-land-food-energy-climate for a resource-efficient Europe / SIM4NEXUS	2016-06-01 - 2020-05-31	2015-09-08	RIA	BALTIJAS VIDES FORUMS
Eranet Sustainable Urbanisation Global Initiative / EN-SUGI	2016-12-01 - 2021-11-30	2016-03-08	ERA-NET-Cofund	VALSTS IZGLITIBAS ATTISTIBAS AGENTURA
Transformations to Sustainability / T2S	2017-01-01 - 2021-12-31	2016-03-07	ERA-NET-Cofund	VALSTS IZGLITIBAS ATTISTIBAS AGENTURA

Establishing the European Geological Surveys Research Area to deliver a Geological Service for Europe / GeoERA	2017-01-01 - 2021-12-31	2016-04-05	ERA-NET-Cofund	LATVIJAS VIDES, GEOLOGIJAS UN METEOROLOGIJAS CENTRS SIA
Promoting and implementing joint programming to reinforce transnational research at the crossroad between biodiversity and climate change / BiodivClim	2019-09-01 - 2024-08-31	2019-02-18	ERA-NET-Cofund	VALSTS IZGLITIBAS ATTISTIBAS AGENTURA
INclusive Health And wellBeing In small and medium size ciTies / IN-HABIT	2020-09-01 - 2025-08-31	2019-09-03	IA	RIGAS PLANOSANAS REGIONS SABIEDRIBA AR IEROBEZOTU ATBILDIBUBC MANUFAKTURA NODIBINAJUMS BALTIC STUDIES CENTRE
<b>EU.3.6. - SOCIETY - Europe in a changing world - inclusive, innovative and reflective Societies</b>				
HERA Joint Research Programme Uses of the Past / HERA JRP UP	2015-01-01 - 2019-12-31	2014-06-03	ERA-NET-Cofund	VALSTS IZGLITIBAS ATTISTIBAS AGENTURA
Youth mobility: maximising opportunities for individuals, labour markets and regions in Europe / YMOBILITY	2015-03-01 - 2018-02-28	2014-06-03	RIA	LATVIJAS UNIVERSITATE
Rebuilding an Inclusive, Value-based Europe of Solidarity and Trust through Social Investments / RE-InVEST	2015-03-01 - 2019-04-30	2014-06-03	RIA	RIGAS STRADINA UNIVERSITATE
Critical Heritages: performing and representing identities in Europe / CoHERE	2016-04-01 - 2019-03-31	2015-05-28	RIA	LATVIJAS KULTURAS AKADEMIJA
CLOSING THE GAP BETWEEN FORMAL AND INFORMAL INSTITUTIONS IN THE BALKANS / INFORM	2016-04-01 - 2019-03-31	2015-05-28	RIA	RIGAS STRADINA UNIVERSITATE
ERA-NET Cofund Smart Urban Futures / ENSUF	2016-05-01 - 2021-04-30	2015-05-28	ERA-NET-Cofund	VALSTS IZGLITIBAS ATTISTIBAS AGENTURA
Empowering Citizens to TrAnsform European PubLic Administrations / CITADEL	2016-10-01 - 2019-09-30	2016-02-04	RIA	VIDES AIZARDZIBAS UN REGIONALAS ATTISTIBAS MINISTRIJA LATVIJAS UNIVERSITATE
The Once Only Principle Project / TOOP	2017-01-01 - 2020-09-30	2016-05-23	IA	VALSTS AKCIJU SABIEDRIBA LATVIJAS JURAS ADMINISTRACIJA*MARITIME ADMINISTRATION OF LATVIA MAL
HERA Joint Research Programme Public Spaces: Culture and Integration in Europe / HERA-JRP-PS	2017-08-01 - 2022-07-31	2017-02-02	ERA-NET-Cofund	VALSTS IZGLITIBAS ATTISTIBAS AGENTURA
Strengthening and Energizing EU-Central Asia relations / SEnECA	2018-01-01 - 2019-12-31	2017-02-02	CSA	LATVIJAS ARPOLITIKAS INSTITUTS

Cultural Heritage and Identities of Europe's Future / CHIEF	2018-05-01 - 2021-04-30	2017-09-13	RIA	DAUGAVPILS UNIVERSITATE
Developing Inclusive & Sustainable Creative Economies / DISCE	2019-01-01 - 2021-12-31	2018-03-13	RIA	STOCKHOLM SCHOOL OF ECONOMICS IN RIGA SIA
<b>EU.3.7. - SECURITY - Secure societies - Protecting freedom and security of Europe and its citizens</b>				
Security Research NCP Network 3 / SEREN 3	2015-05-01 - 2018-04-30	2014-08-28	CSA	RIGAS TEHNISKA UNIVERSITATE
Smart Mature Resilience / SMR	2015-06-01 - 2018-06-30	2014-08-28	RIA	RIGAS DOME
Intelligent Portable Border Control System / iBorderCtrl	2016-09-01 - 2019-08-31	2015-08-27	RIA	LATVIAN STATE BORDER GUARD
Next generation authentication for the digital age / NK-52-2016	2017-04-01 - 2017-09-30	2016-09-07	SME-1	SIA NOTAKEY
Terrorism pRevention Via rAdicalisation countEr-NarraTive / TRIVALENT	2017-05-01 - 2020-04-30	2016-08-25	RIA	IEKSLIETU MINISTRIJAS VALSTS POLICIJA STATE POLICE OF THE MINISTRY OF INTERIOR
Innovation by Law Enforcement Agencies networking / ILEAnet	2017-06-01 - 2022-05-31	2016-08-25	CSA	IEKSLIETU MINISTRIJAS VALSTS POLICIJA STATE POLICE OF THE MINISTRY OF INTERIOR
GDPR Compliance Cloud Platform for Micro Enterprises / SMOOTH	2018-05-01 - 2020-10-31	2017-08-24	IA	DATU VALSTS INSPEKCIJA
SEcurity REsearch NCP network 4 / SEREN 4	2018-05-01 - 2021-02-28	2017-08-22	CSA	RIGAS TEHNISKA UNIVERSITATE
Technology, training and knowledge for Early-Warning / Early-Action led policing in fighting Organised Crime and Terrorism / COPKIT	2018-06-01 - 2021-05-31	2017-08-24	RIA	IEKSLIETU MINISTRIJAS VALSTS POLICIJA STATE POLICE OF THE MINISTRY OF INTERIOR
Pan-European Network of Customs Practitioners / PEN-CP	2018-09-01 - 2023-08-31	2017-08-24	CSA	VALSTS IENEMUMU DIENESTS
PREparedness against CBRNE threats through cOmmon Approaches between security praCTitioners and the Vulnerable civil society / PROACTIVE	2019-05-01 - 2022-04-30	2018-08-28	RIA	IEKSLIETU MINISTRIJAS VALSTS POLICIJA STATE POLICE OF THE MINISTRY OF INTERIOR
NOVEL INTEGRATED SOLUTION OF OPERATING A FLEET OF DRONES WITH MULTIPLE SYNCHRONIZED MISSIONS FOR DISASTER RESPONSES / RESPONDRONE	2019-05-01 - 2022-04-30	2018-08-28	RIA	STATE FIRE AND RESCUE SERVICE
Securing The European Gas Network / SecureGas	2019-06-01 - 2021-05-31	2018-08-28	IA	RIGAS TEHNISKA UNIVERSITATE
Intelligence Network and Secure Platform for Evidence Correlation and Transfer (INSPECTr) / INSPECTr	2019-09-01 - 2022-08-31	2018-08-28	RIA	IEKSLIETU MINISTRIJAS VALSTS POLICIJA STATE POLICE OF THE MINISTRY OF INTERIOR
Detecting Document frauD and iDentity on the fly / D4FLY	2019-09-01 - 2022-08-31	2018-08-28	RIA	REGULA BALTIJA SIA
Real-tIme on-site forenSic tracE qualificatioN / RISEN	2020-07-01 - 2024-06-30	2019-08-22	RIA	VALSTS TIESU EKSPERTIZU BIROJS

Innovative AppRoach to Urban Security / IcARUS	2020-09-01 - 2024-08-31	2019-08-14	RIA	RIGAS PASVALDIBAS POLICIJA
EMPOWERING AND EDUCATING YOUNG PEOPLE FOR THE INTERNET BY PLAYING / RAYUELA	2020-10-01 - 2023-09-30	2019-08-21	RIA	TILDE SIA
<b>EU.4.0. - SEAWP-CROSST - Spreading excellence and widening participation - Cross-theme</b>				
Week of Innovative Regions in Europe 2015 (WIRE VI) / WIRE2015	2014-12-01 - 2015-11-30	2014-11-29	CSA	VALSTS IZGLITIBAS ATTISTIBAS AGENTURA
EXPAND - enhancing co-creation in JPI Urban Europe through widening Member State and stakeholder participation / EXPAND	2016-09-01 - 2019-02-28	2016-02-03	CSA	VALSTS IZGLITIBAS ATTISTIBAS AGENTURA
EXPAND II - Widening participation of countries and stakeholders in JPI Urban Europe through capacity building in urban policy, funding and research / EXPAND II	2019-06-01 - 2021-11-30	2018-11-15	CSA	LATVIJAS ZINATNES PADOME
Increased drainage effects on soil properties and water quality / IDESoWa	2019-07-15 - 2021-07-14	2018-09-12	MSCA-IF-EF-ST	LATVIJAS LAUKSAIMNIECIBAS UNIVERSITATE
<b>EU.4.a. - WIDESPREAD - Teaming of excellent research institutions and low performing RDI regions</b>				
CAMART2	2015-06-01 - 2016-05-31	2014-09-17	SGA-CSA	LATVIJAS UNIVERSITATES CIETVIELU FIZIKAS INSTITUTS
Centre of Advanced Materials Research and Technology Transfer CAMART <sup>2</sup> / CAMART2	2017-02-01 - 2024-01-31	2016-06-22	SGA-CSA	LATVIJAS UNIVERSITATES CIETVIELU FIZIKAS INSTITUTS
Baltic Biomaterials Centre of Excellence / BBCE	2017-09-01 - 2018-08-31	2016-11-15	CSA	RIGAS STRADINA UNIVERSITATE RIGAS TEHNISKA UNIVERSITATE SABIEDRIBA AR IEROBEZOTU ATBILDIBURIGAS STRADINA UNIVERSITATES STOMATOLOGIJAS INSTITUTS LATVIJAS ORGANISKAS SINTEZES INSTITUTS
Baltic Biomaterials Centre of Excellence / BBCE	2020-01-01 - 2026-12-31	2018-11-15	CSA	LATVIJAS ORGANISKAS SINTEZES INSTITUTS RIGAS STRADINA UNIVERSITATE RIGAS TEHNISKA UNIVERSITATE SABIEDRIBA AR

				IEROBEZOTU ATBILDIBURIGAS STRADINA UNIVERSITATES STOMATOLOGIJAS INSTITUTS
<b>EU.4.b. - TWINING - Twinning of research institutions</b>				
Building on Advanced Lofar Technology for Innovation, Collaboration, and Sustainability / BALTICS	2016-01-01 - 2018-12-31	2015-05-07	CSA	VENTSPILS AUGSTSKOLA
TWINNING ON DNA-BASED CANCER VACCINES / VACTRAIN	2016-01-01 - 2018-12-31	2015-05-07	CSA	RIGAS STRADINA UNIVERSITATE
Enhancing excellence and innovation capacity in sustainable transport interchanges / ALLIANCE	2016-01-01 - 2018-12-31	2015-05-07	CSA	AKCIJU SABIEDRIBA TRANSPORTA UN SAKARU INSTITUTS
Integration of knowledge and biobank resources in comprehensive translational approach for personalized prevention and treatment of metabolic disorders / INTEGROMED	2019-10-01 - 2022-09-30	2018-11-15	CSA	LATVIJAS BIOMEDICINAS PETIJUMU UN STUDIJU CENTRS
Networking for excellence in functional pharmacology to study the role of fatty acid metabolism in neurological disorders / FAT4BRAIN	2019-11-01 - 2022-10-31	2018-11-15	CSA	LATVIJAS ORGANISKAS SINTEZES INSTITUTS
Springboard for excellence in advanced development of antibacterials / SPRINGBOARD	2020-09-01 - 2023-08-31	2019-11-13	CSA	LATVIJAS ORGANISKAS SINTEZES INSTITUTS
Rising competitiveness of early stage researchers and research management in Latvia / RISEus2	? - ?	2019-11-14	CSA	RIGAS TEHNISKA UNIVERSITATE
Reducing networking gaps between Rīga Stradiņš University (RSU) and internationally - leading counterparts in viral infection-induced autoimmunity research / VirA	? - ?	2019-11-14	CSA	RIGAS STRADINA UNIVERSITATE
<b>EU.4.f. - NCPNET - Transnational networks of National Contact Points</b>				
Transnational Network of cooperation for WIDESPREAD NCPs / NCP_WIDE.NET	2015-01-01 - 2020-12-31	2014-03-26	CSA	VALSTS IZGLITIBAS ATTISTIBAS AGENTURA LR IZGLITIBAS UN ZINATNES MINISTRIJA
<b>EU.5.a. - CAREER - Make scientific and technological careers attractive for young people</b>				
Making European research careers more attractive by developing new services and enhancing the current services of the EURAXESS network – EURAXESS TOPIII / EURAXESS TOP III	2015-09-01 - 2018-08-31	2014-10-02	CSA	LATVIJAS VALSTS KOKSNES KIMIJAS INSTITUTS

Open EURAXESS – To strengthen the effectiveness and optimize the services of all partners in an innovative and open EURAXESS network / EURAXESS TOP IV	2018-09-01 - 2021-08-31	2017-08-30	CSA	VALSTS IZGLITIBAS ATTISTIBAS AGENTURA
<b>EU.5.c. - INEGSOC - Integrate society in science and innovation</b>				
CITIZEN AND MULTI-ACTOR CONSULTATION ON HORIZON2020 / CIMULACT	2015-06-01 - 2018-03-31	2014-10-02	CSA	SIA BALTIJAS KONSULTACIJAS
SPARKS	2015-07-01 - 2018-06-30	2014-10-02	CSA	LATVIJAS ZINATNES CENTRU APVIENIBA
<b>EU.5.d. - SCIENCE - Encourage citizens to engage in science</b>				
Science in the City: Building Participatory Urban Learning Community Hubs through Research and Activation / PULCHRA	2019-09-01 - 2022-08-31	2018-11-13	CSA	BERNU VIDES SKOLA
<b>EU.5.f. - GOV - Develop the governance for the advancement of responsible research and innovation</b>				
Virtue based ethics and Integrity of Research: Train-the-Trainer program for Upholding the principles and practices of the European Code of Conduct for Research Integrity / VIRT2UE	2018-06-01 - 2021-05-31	2017-08-30	CSA	LATVIJAS UNIVERSITATE
<b>Euratom - EURATOM - Euratom</b>				
Implementation of activities described in the Roadmap to Fusion during Horizon 2020 through a Joint programme of the members of the EUROfusion consortium / EUROfusion	2014-01-01 - 2022-12-31	2014-01-31	COFUND- EJP	LATVIJAS UNIVERSITATE LATVIJAS UNIVERSITATES CIETVIELU FIZIKAS INSTITUTS
European Joint Programme for the Integration of Radiation Protection Research / CONCERT	2015-06-01 - 2020-05-31	2014-09-17	COFUND- EJP	LATVIJAS UNIVERSITATE RIGAS TEHNISKA UNIVERSITATE
Baltic Region Initiative for Long Lasting InnovAtive Nuclear Technologies / BRILLIANT	2015-07-01 - 2018-06-30	2014-09-17	CSA	LATVIJAS UNIVERSITATE LATVIJAS UNIVERSITATES AGENTURA LATVIJAS UNIVERSITATES FIZIKAS INSTITUTS
European Sodium Fast Reactor Safety Measures Assessment and Research Tools / ESFR-SMART	2017-09-01 - 2021-08-31	2016-10-04	RIA	LATVIJAS UNIVERSITATE